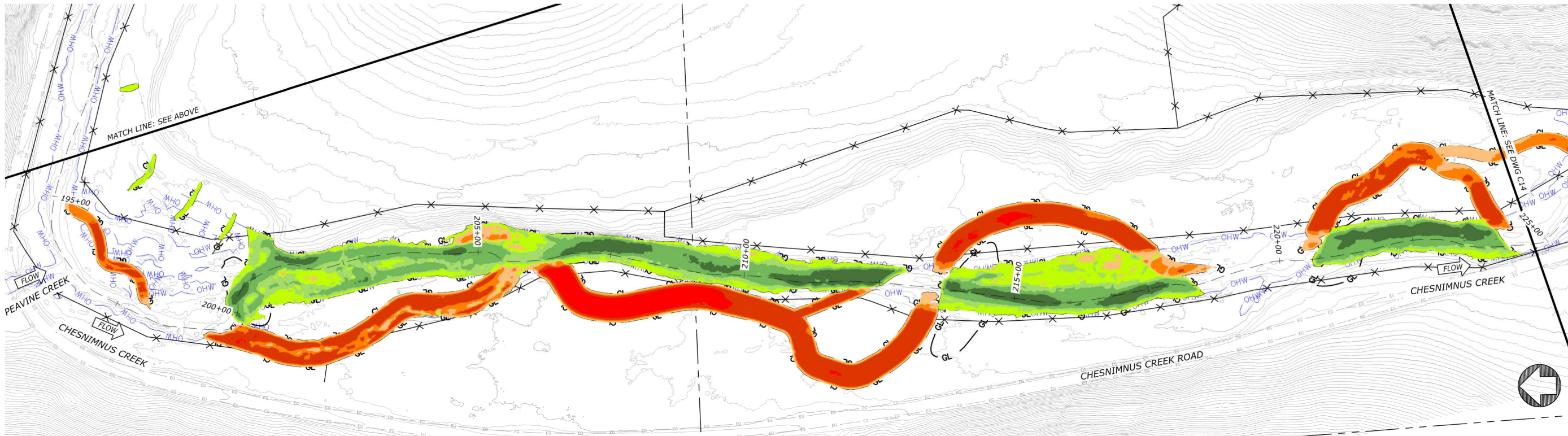


EARTHWORK - STA. 169+40 TO 194+30

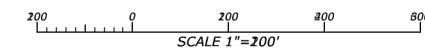


EARTHWORK - STA. 194+30 TO 224+75

EARTHWORK VOLUMES			
ZONE	CUT (CY)	FILL (CY)	NET (CY)
ZONE 1	8,061	5,957	2,104 (CUT)
ZONE 2	6,758	3,462	3,296 (CUT)
ZONE 3	16,348	13,482	2,866 (CUT)
ZONE 4	20,471	23,103	2,632 (FILL)
TOTAL	51,638	46,004	5,634 (CUT)

- TABLE NOTES:**
- VOLUMES ARE APPROXIMATE AND REPRESENT F.G. MINUS E.G. ONLY.
 - VOLUMES DO NOT INCLUDE ADDITIONAL OVER EXCAVATION REQUIRED FOR PLACEMENT OF TOPSOIL, RIFLE MATERIALS OR INSTALLATION OF LWM STRUCTURES.
 - THE CUT AND FILL VOLUMES WERE CALCULATED USING A COMPOSITE SURFACE OF THE ENTIRE PROJECT COMPARED TO THE EXISTING GROUND SURFACE AND DO NOT ACCOUNT FOR ANY TEMPORARY PLACEMENT AND ADDITIONAL MOVEMENT.
 - THE QUANTITY OF MATERIAL TO BE EXCAVATED OR PLACED HAS BEEN MEASURED BY SURFACE SUBTRACTION IN AUTOCAD AND IS THEREFORE ASSUMED TO BE COMPACTED IN-PLACE AND NOT FACTORED FOR ANY POTENTIAL EXPANSION.

ELEVATIONS TABLE			
NUMBER	MINIMUM ELEVATION	MAXIMUM ELEVATION	COLOR
1	-9.00	-4.00	Red
2	-4.00	-2.00	Orange
3	-2.00	-1.00	Light Orange
4	-1.00	0.00	Yellow
5	0.00	1.00	Light Green
6	1.00	2.00	Green
7	2.00	4.00	Dark Green
8	4.00	7.00	Very Dark Green



CHESNIMNUS CREEK - WILLIAMS
RESTORATION DESIGN
DRAFT 80% DESIGN DRAWINGS

FOR NEZ PERCE TRIBE
CHESNIMNUS CREEK, GRANDE RONDE RIVER BASIN, OREGON
WALLOWA COUNTY, OREGON

**WORKING DRAFT
FOR REVIEW AND
REVISION**

DATE: JULY, 2025
DESIGNED: MP, IB, JF, ZS, SB
APPROVED: JF

DRAWING NAME
PROPOSED CONDITIONS

EARTHWORK - 4

DRAWING NO.
C13
SHEET 18 OF 94

FILE: R:\PROJECTS\LOWER GRANDE RONDE_HUC65\CHESNIMNUS_CREEK_NPT\CAD\PRODUCTION\CHESNIMNUS_NPT-EARTHWORK.DWG SAVED BY: ZACH SUDMAN PLOT DATE: 7/30/2025 5:35 PM

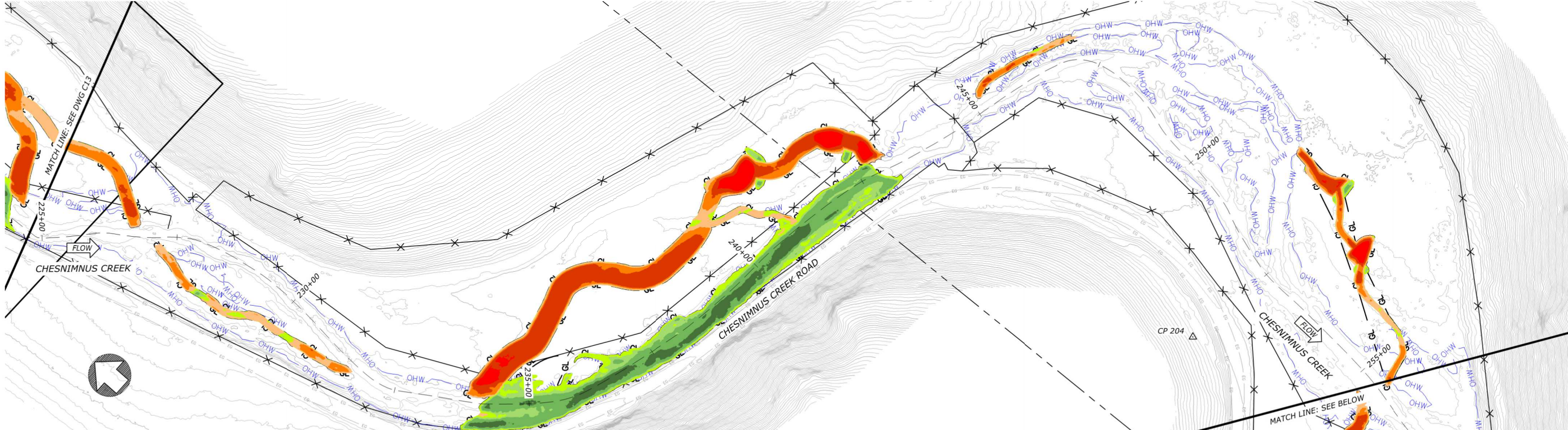
**WORKING DRAFT
FOR REVIEW AND
REVISION**

DATE: JULY, 2025
DESIGNED: MP, IB, JF, ZS, SB
APPROVED: JF

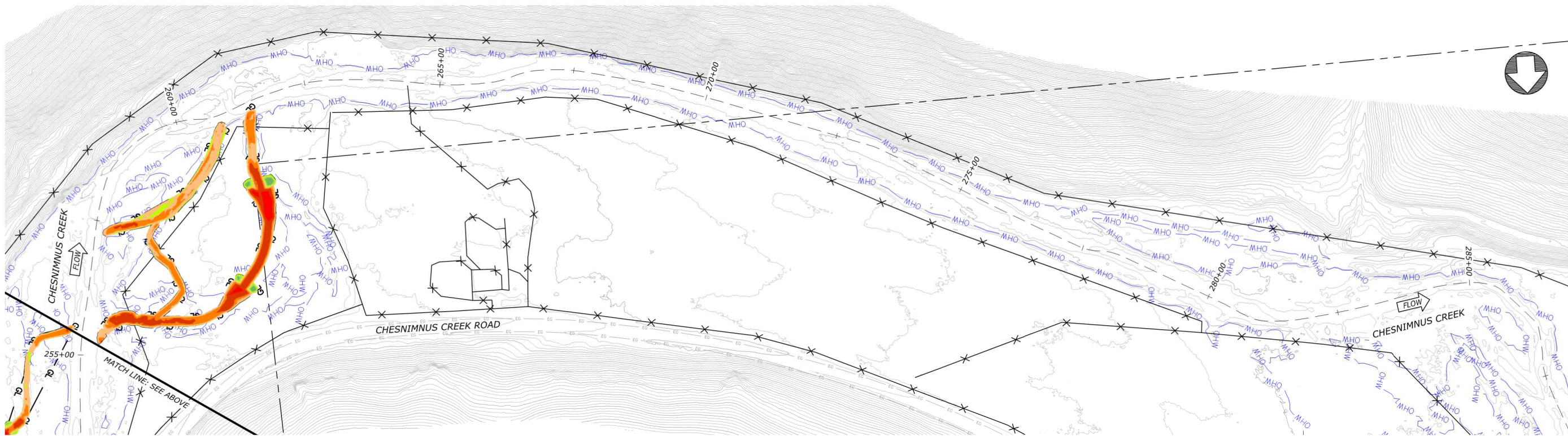
DRAWING NAME
PROPOSED CONDITIONS

EARTHWORK - 5

DRAWING NO.
C14
SHEET 19 OF 94



EARTHWORK - STA. 224+75 TO 255+35

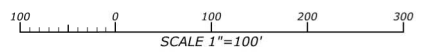


EARTHWORK - STA. 255+35 TO 288+60

EARTHWORK VOLUMES			
ZONE	CUT (CY)	FILL (CY)	NET (CY)
ZONE 1	8,061	5,957	2,104 (CUT)
ZONE 2	6,758	3,462	3,296 (CUT)
ZONE 3	16,348	13,482	2,866 (CUT)
ZONE 4	20,471	23,103	2,632 (FILL)
TOTAL	51,638	46,004	5,634 (CUT)

- TABLE NOTES:**
- VOLUMES ARE APPROXIMATE AND REPRESENT F.G. MINUS E.G. ONLY. VOLUMES DO NOT INCLUDE ADDITIONAL OVER EXCAVATION REQUIRED FOR PLACEMENT OF TOPSOIL, RIFFLE MATERIALS OR INSTALLATION OF LWM STRUCTURES.
 - THE CUT AND FILL VOLUMES WERE CALCULATED USING A COMPOSITE SURFACE OF THE ENTIRE PROJECT COMPARED TO THE EXISTING GROUND SURFACE AND DO NOT ACCOUNT FOR ANY TEMPORARY PLACEMENT AND ADDITIONAL MOVEMENT.
 - THE QUANTITY OF MATERIAL TO BE EXCAVATED OR PLACED HAS BEEN MEASURED BY SURFACE SUBTRACTION IN AUTOCAD AND IS THEREFORE ASSUMED TO BE COMPACTED IN-PLACE AND NOT FACTORED FOR ANY POTENTIAL EXPANSION.

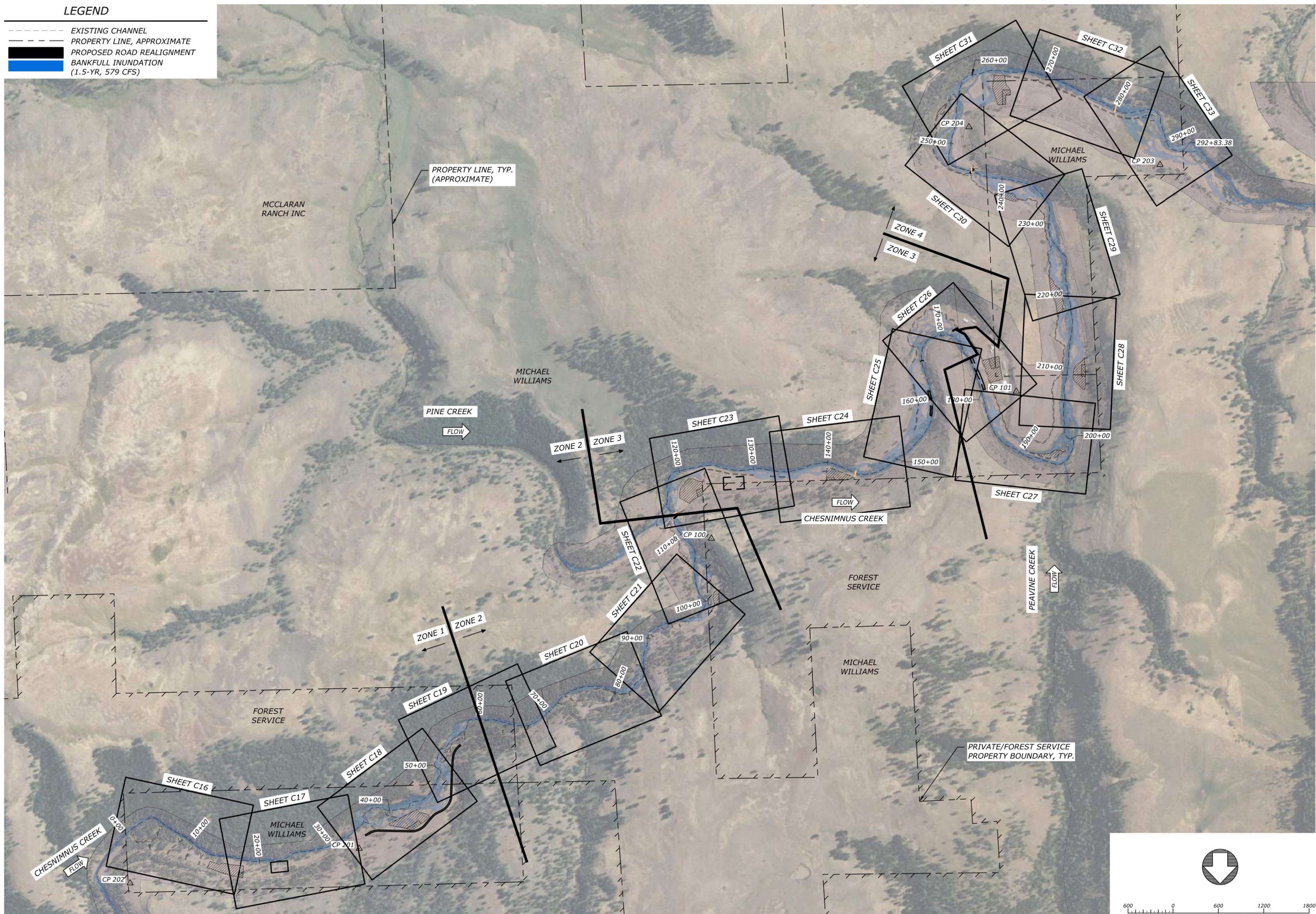
ELEVATIONS TABLE			
NUMBER	MINIMUM ELEVATION	MAXIMUM ELEVATION	COLOR
1	-9.00	-4.00	Red
2	-4.00	-2.00	Orange
3	-2.00	-1.00	Light Orange
4	-1.00	0.00	Yellow
5	0.00	1.00	Light Green
6	1.00	2.00	Green
7	2.00	4.00	Dark Green
8	4.00	7.00	Black



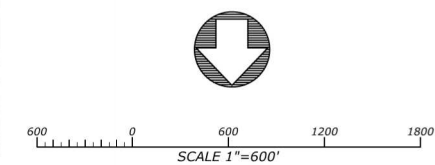
FILE: R:\PROJECTS\LOWER GRANDE RONDE\HUGGS\CHESNIMNUS CREEK\INT\CAD\PRODUCTION\CHESNIMNUS.NET\EARTHWORK.DWG. SAVED BY: ZACH SUDMAN. PLOT DATE: 7/30/2025 5:43 PM

LEGEND

- EXISTING CHANNEL
- - - PROPERTY LINE, APPROXIMATE
- █ PROPOSED ROAD REALIGNMENT
- █ BANKFULL INUNDATION (1.5-YR, 579 CFS)



PROPOSED CONDITIONS - OVERVIEW



**CHESNIMNUS CREEK - WILLIAMS
RESTORATION DESIGN
DRAFT 80% DESIGN DRAWINGS**

FOR NEZ PERCE TRIBE
CHESNIMNUS CREEK, GRANDE RONDE RIVER BASIN, OREGON
WALLOWA COUNTY, OREGON

**WORKING DRAFT
FOR REVIEW AND
REVISION**

DATE: JULY, 2025
DESIGNED: MP, IB, JE, ZS, SB
APPROVED: JE

DRAWING NAME
PROPOSED CONDITIONS

OVERVIEW

DRAWING NO.
C15
SHEET 20 OF 94

FILE: R:\PROJECTS\LOWER GRANDE RONDE_HUC65\CHESNIMNUS_CREEK\NPT\CAD\PRODUCTION\CHESNIMNUS_NPT_PROPOSED_CONDITIONS.DWG SAVED BY: ISABELLE PLOT DATE: 8/2/2025 4:10 PM