

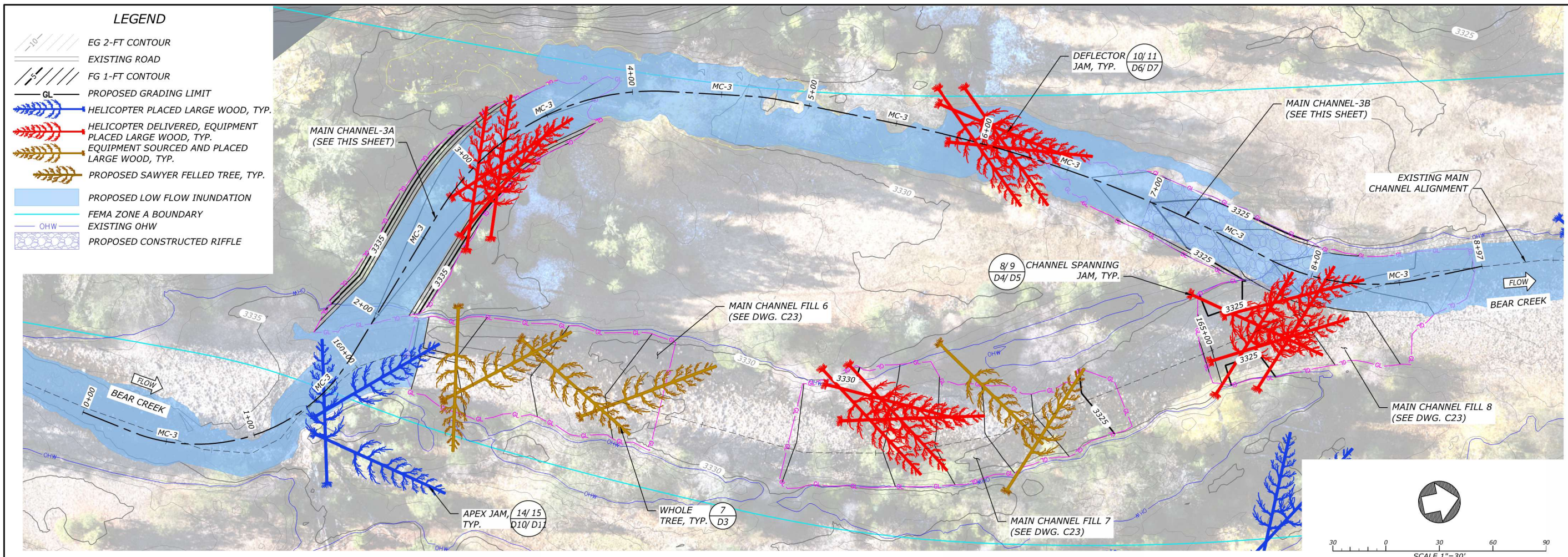
WORKING DRAFT
FOR REVIEW AND
REVISION

DATE: 10/15/2025
DESIGNED: JF, RR, ZS, MG
APPROVED: JF

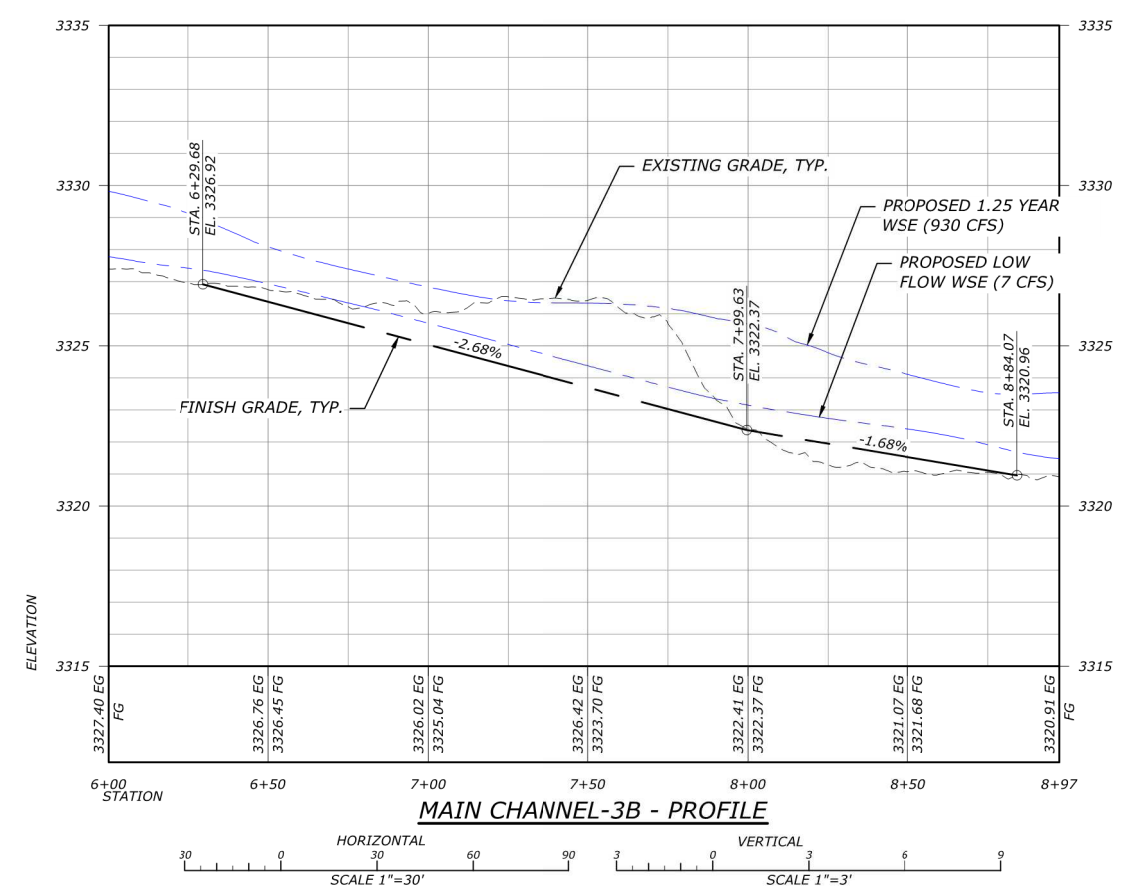
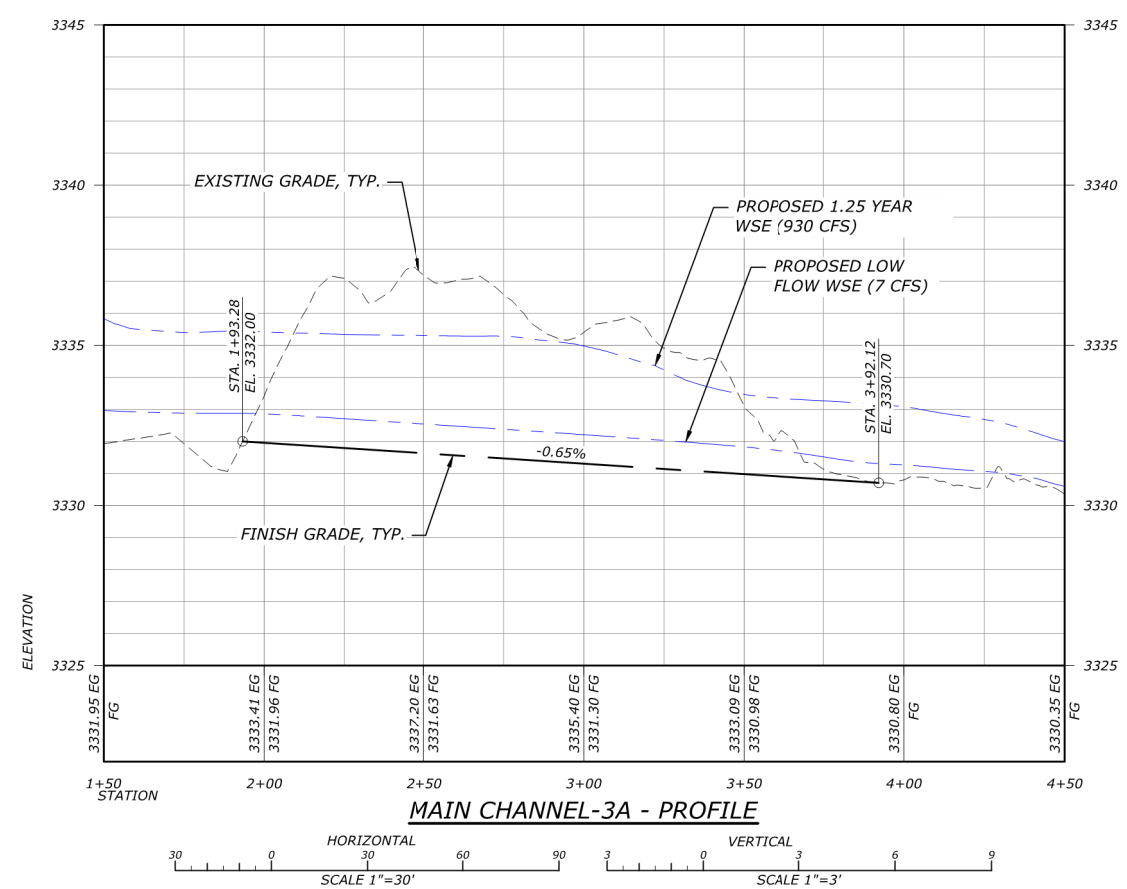
DRAWING NAME
PLAN & PROFILES

MAIN CHANNEL-3A & 3B

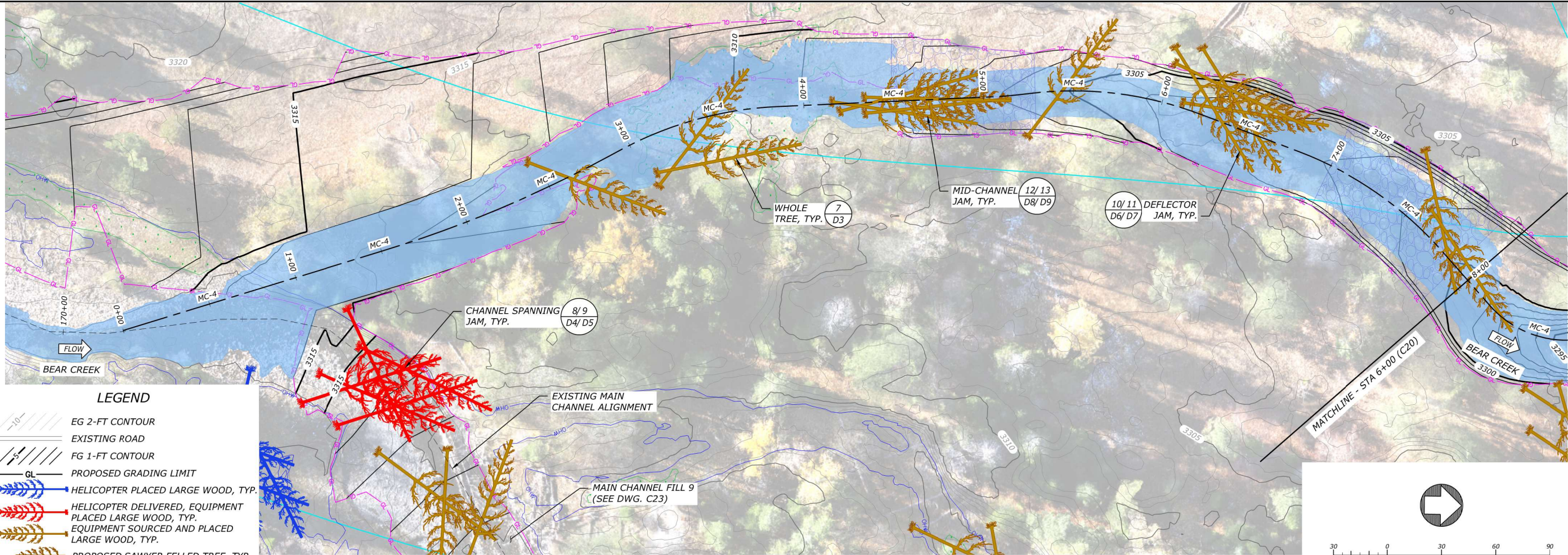
DRAWING NO.
C18
SHEET 26 OF 57



MAIN CHANNEL-3A & 3B - PLAN

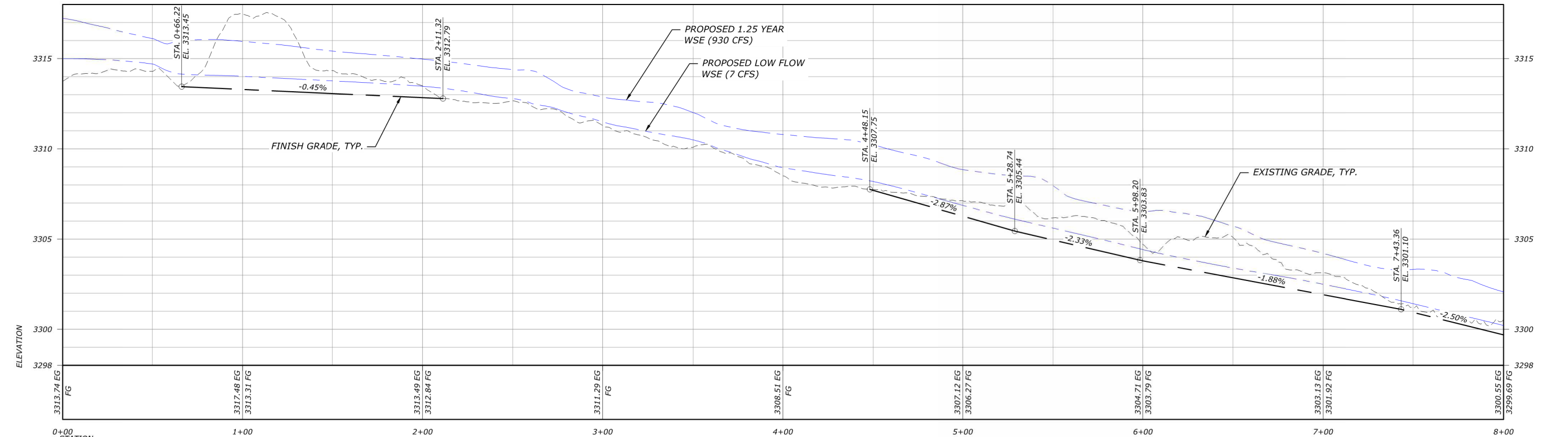


FILE: R:\PROJECTS\WALLOWA_HUC141\BEAR_CR_ODEV\CAD\PRODUCT\MAIN\BEAR-CREEK-PLAN\PROFILES.DWG. SAVED BY: ZACH SUDMAN. PLOT DATE: 10/14/2025 4:35 PM

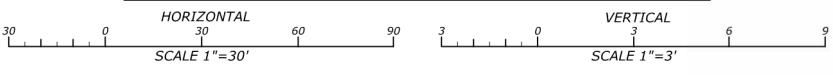


- LEGEND**
- EG 2-FT CONTOUR
 - EXISTING ROAD
 - FG 1-FT CONTOUR
 - PROPOSED GRADING LIMIT
 - HELICOPTER PLACED LARGE WOOD, TYP.
 - HELICOPTER DELIVERED, EQUIPMENT PLACED LARGE WOOD, TYP.
 - EQUIPMENT SOURCED AND PLACED LARGE WOOD, TYP.
 - PROPOSED SAWYER FELLED TREE, TYP.
 - PROPOSED LOW FLOW INUNDATION
 - FEMA ZONE A BOUNDARY
 - OHW
 - EXISTING OHW

MAIN CHANNEL-4A STA 0+00 TO 8+00 - PLAN



MAIN CHANNEL-4A STA 0+00 TO 8+00 - PROFILE



BEAR CREEK & LITTLE BEAR CREEK-SAUSAGE FISH HABITAT RESTORATION PROJECT

80% DESIGN DRAWINGS

GRANDE RONDE MODEL WATERSHED
BEAR CREEK
GRANDE RONDE RIVER BASIN, OREGON

WORKING DRAFT FOR REVIEW AND REVISION

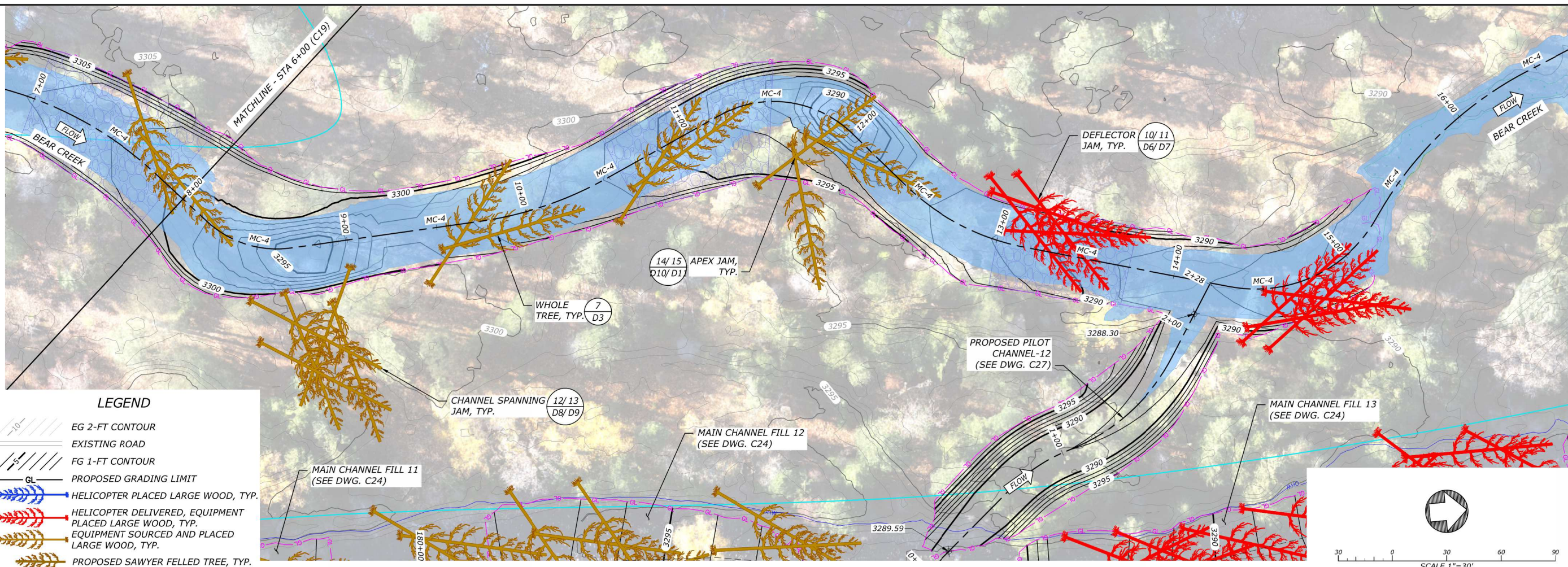
DATE: 10/15/2025
DESIGNED: JF, RR, ZS, MG
APPROVED: JF

DRAWING NAME
PLAN & PROFILES

MAIN CHANNEL-4A STA 0+00 TO 8+00

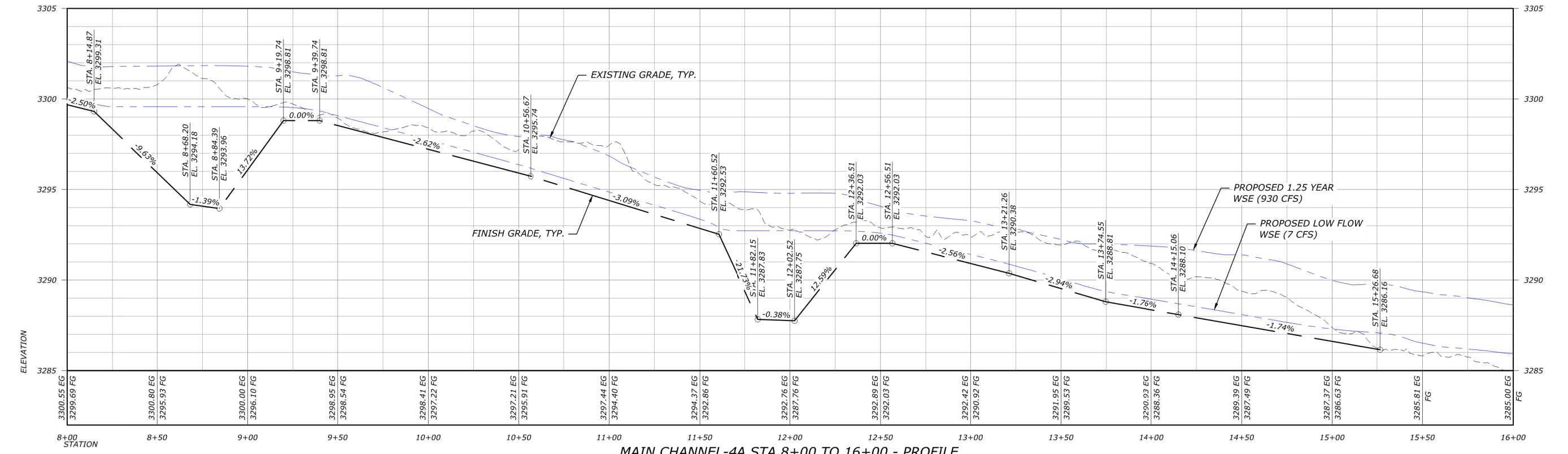
DRAWING NO.
C19
SHEET 27 OF 57

FILE: R:\PROJECTS\WALLOVA_HUC1431\BEAR_CR_ODEV\CAD\PRODUCT\MAIN\BEAR-CREEK-PLAN\PROFILES.DWG SAVED BY: ZACH SUDMAN PLOT DATE: 10/14/2025 4:36 PM



MAIN CHANNEL-4A STA 8+00 TO 16+00 - PLAN

- LEGEND**
- EG 2-FT CONTOUR
 - EXISTING ROAD
 - FG 1-FT CONTOUR
 - PROPOSED GRADING LIMIT
 - HELICOPTER PLACED LARGE WOOD, TYP.
 - HELICOPTER DELIVERED, EQUIPMENT PLACED LARGE WOOD, TYP.
 - EQUIPMENT SOURCED AND PLACED LARGE WOOD, TYP.
 - PROPOSED SAWYER FELLED TREE, TYP.
 - PROPOSED LOW FLOW INUNDATION
 - FEMA ZONE A BOUNDARY
 - EXISTING OHW



MAIN CHANNEL-4A STA 8+00 TO 16+00 - PROFILE



BEAR CREEK & LITTLE BEAR CREEK-SAUSAGE FISH HABITAT RESTORATION PROJECT

80% DESIGN DRAWINGS

GRANDE RONDE MODEL WATERSHED
BEAR CREEK
GRANDE RONDE RIVER BASIN, OREGON

WORKING DRAFT FOR REVIEW AND REVISION

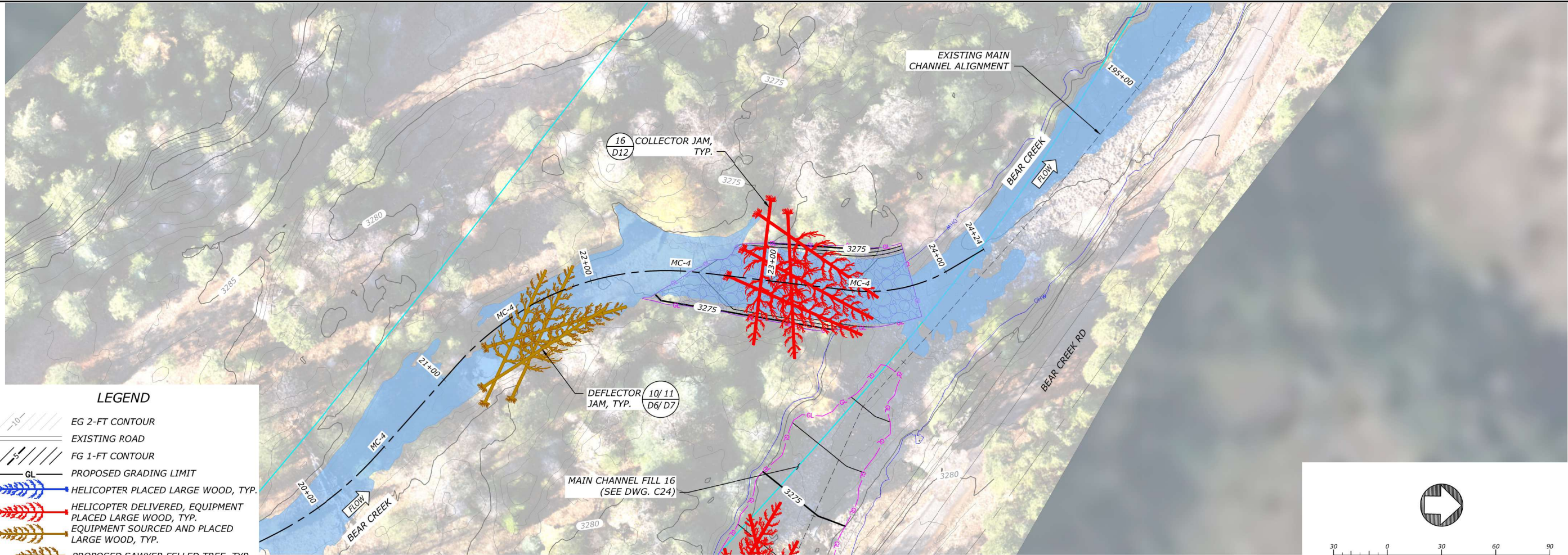
DATE: 10/15/2025
DESIGNED: JF, RR, ZS, MG
APPROVED: JF

DRAWING NAME
PLAN & PROFILES

MAIN CHANNEL-4A STA 8+00 TO 16+00

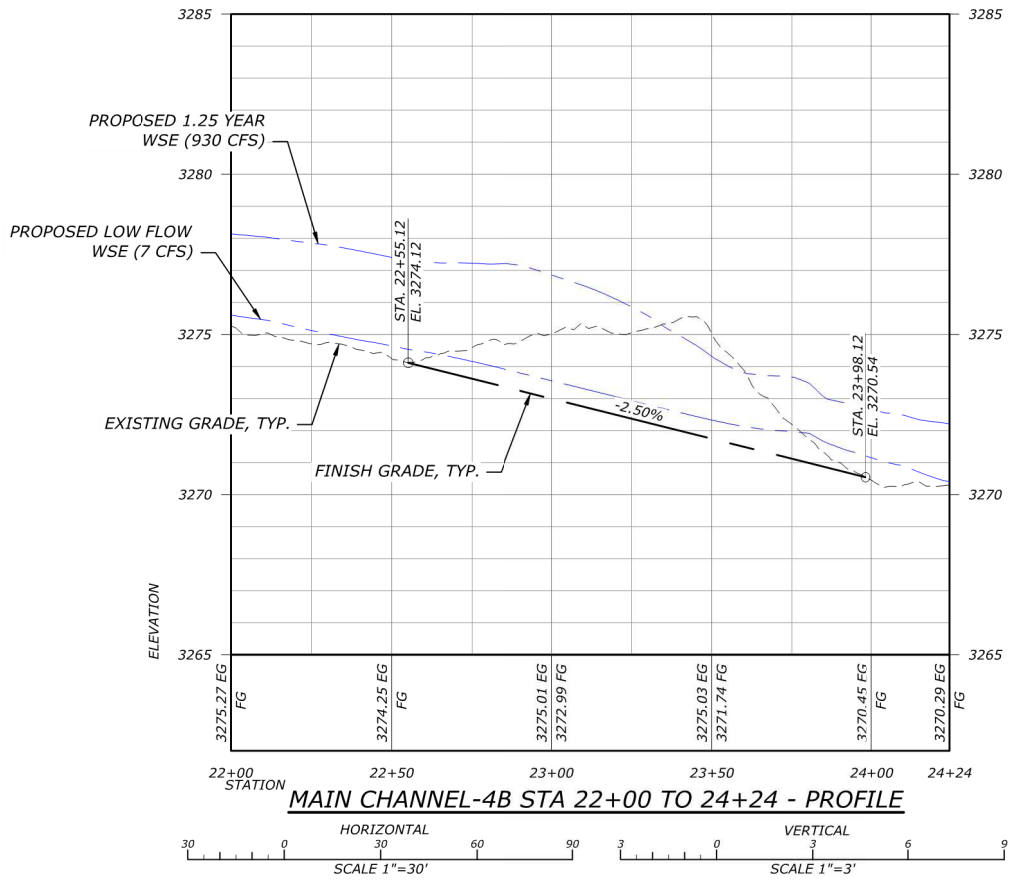
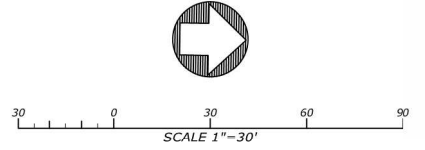
DRAWING NO.
C20
SHEET 28 OF 57

FILE: R:\PROJECTS\WALLOVA_HUC1431\BEAR_CR_ODEW\CAD\PRODUCT\MAIN\BEAR-CREEK-PLAN\PROFILES.DWG SAVED BY: ZACH SUDMAN PLOT DATE: 10/14/2025 4:37 PM

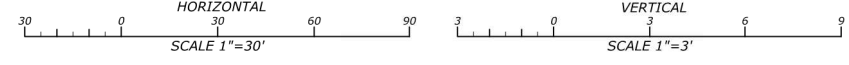


- LEGEND**
- EG 2-FT CONTOUR
 - EXISTING ROAD
 - FG 1-FT CONTOUR
 - PROPOSED GRADING LIMIT
 - HELICOPTER PLACED LARGE WOOD, TYP.
 - HELICOPTER DELIVERED, EQUIPMENT PLACED LARGE WOOD, TYP.
 - EQUIPMENT SOURCED AND PLACED LARGE WOOD, TYP.
 - PROPOSED SAWYER FELLED TREE, TYP.
 - PROPOSED LOW FLOW INUNDATION
 - FEMA ZONE A BOUNDARY
 - OHW EXISTING OHW

MAIN CHANNEL-4B STA 22+00 TO 24+24 - PLAN



MAIN CHANNEL-4B STA 22+00 TO 24+24 - PROFILE



FILE: R:\PROJECTS\WALLOWA_HUC141\BEAR_CR_ODEW\CAD\PRODUCTION\BEAR-CREEK-PLAN\PROFILES.DWG SAVED BY: ZACH SUDMAN PLOT DATE: 10/14/2025 4:38 PM



BEAR CREEK & LITTLE BEAR CREEK-SAUSAGE FISH HABITAT RESTORATION PROJECT

80% DESIGN DRAWINGS

GRANDE RONDE MODEL WATERSHED
BEAR CREEK
GRANDE RONDE RIVER BASIN, OREGON

WORKING DRAFT FOR REVIEW AND REVISION

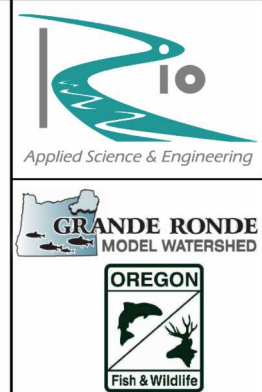
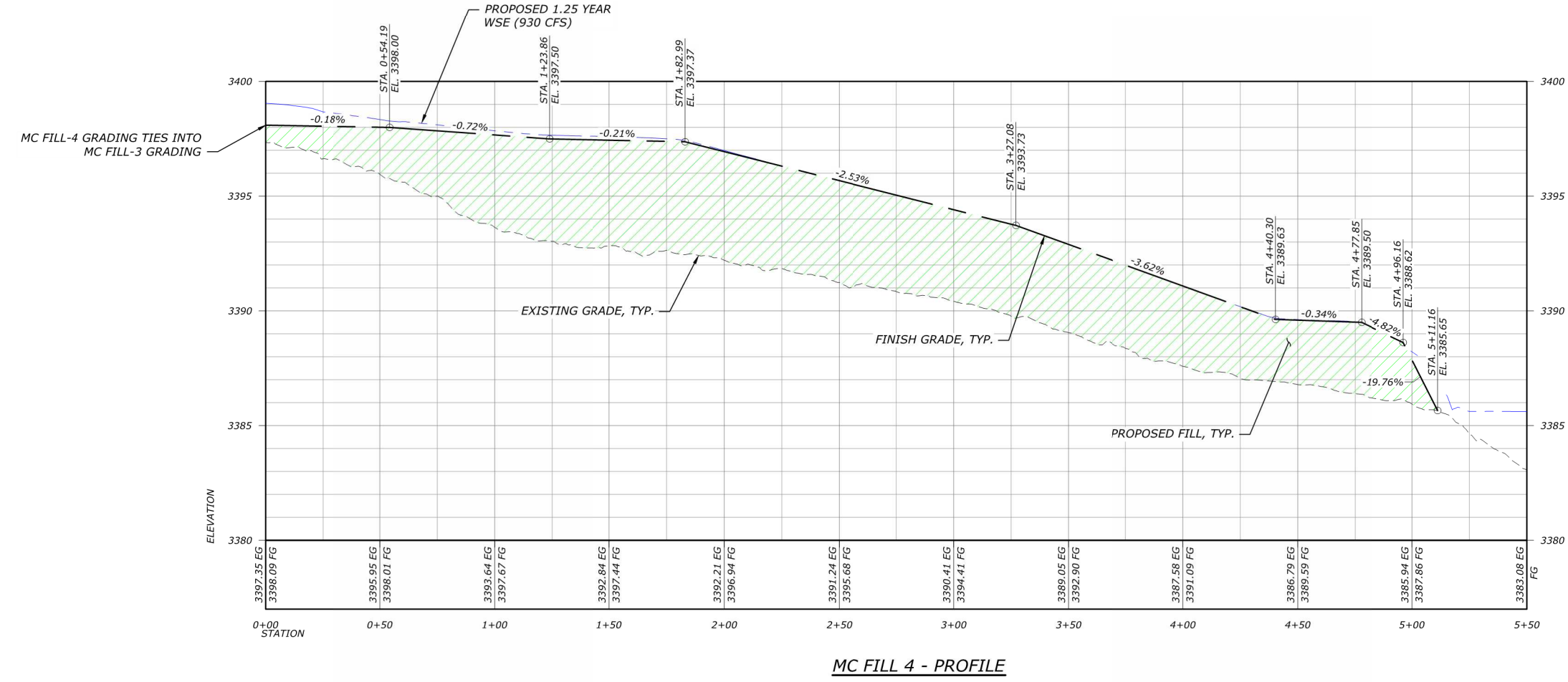
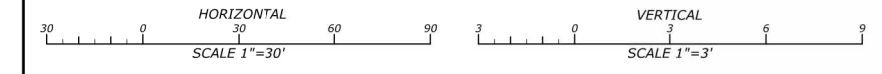
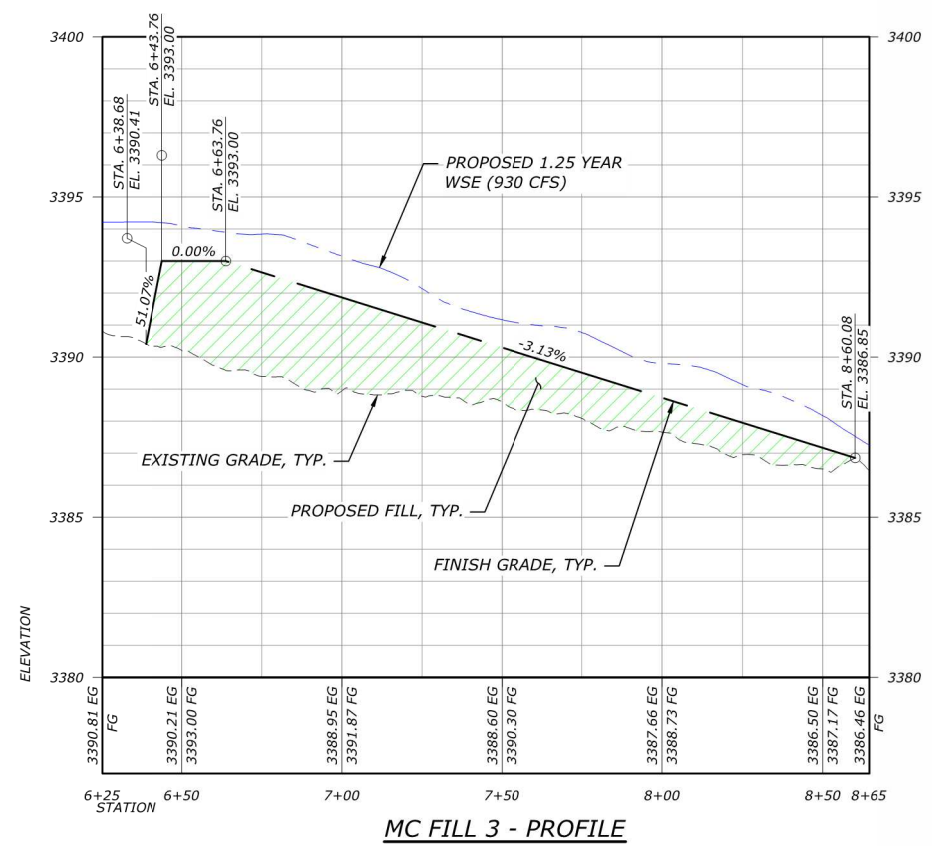
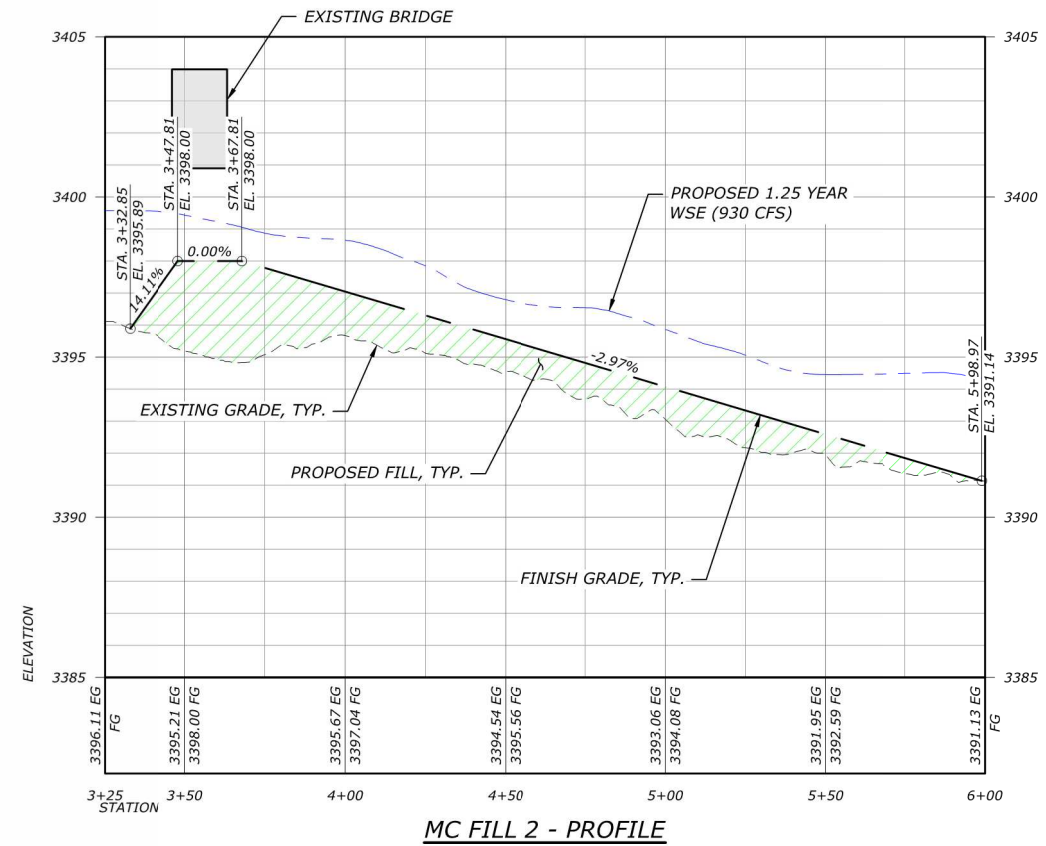
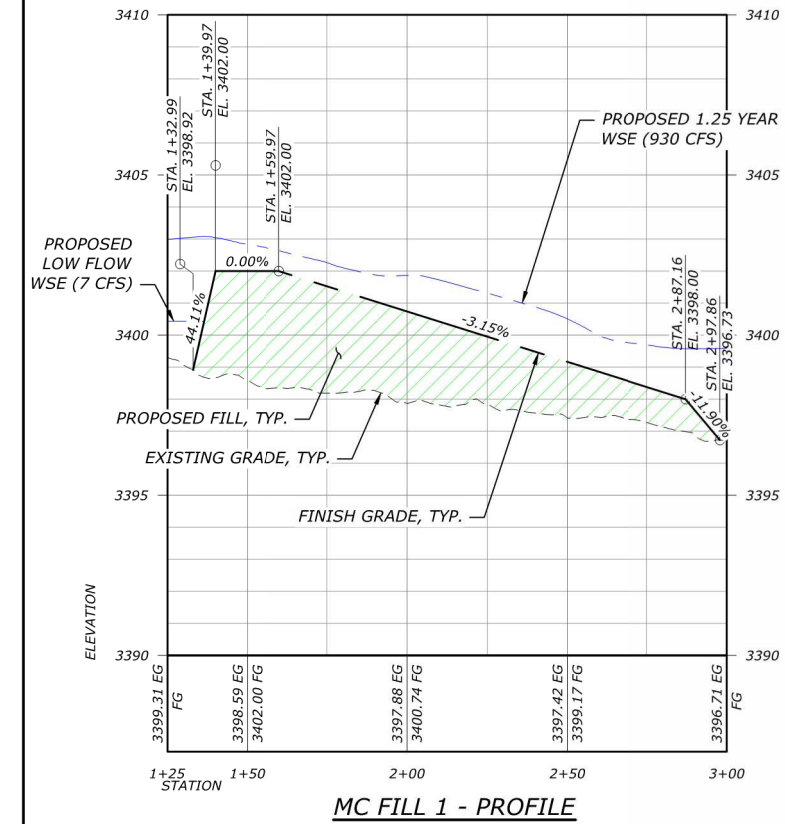
DATE: 10/15/2025
DESIGNED: JF, RR, ZS, MG
APPROVED: JF

DRAWING NAME
PLAN & PROFILES

MAIN CHANNEL-4B STA 22+00 TO 24+24

DRAWING NO.
C21
SHEET 29 OF 57

FILE: R:\PROJECTS\WALLOWA_HUC141\BEAR_CR_ODEVLCAD\PRODUCTION\BEAR-CREEK-BLA\PROFILES.DWG SAVED BY: ZACH SUDMAN PLOT DATE: 10/14/2025 4:39 PM



BEAR CREEK & LITTLE BEAR CREEK-SAUSAGE FISH HABITAT RESTORATION PROJECT
80% DESIGN DRAWINGS
 GRANDE RONDE MODEL WATERSHED
 BEAR CREEK
 GRANDE RONDE RIVER BASIN, OREGON

WORKING DRAFT FOR REVIEW AND REVISION

DATE:	10/15/2025
DESIGNED:	JF, RR, ZS, MG
APPROVED:	JF
DRAWING NAME	PLAN & PROFILES
DRAWING NO.	C22
	SHEET 30 OF 57

BEAR CREEK & LITTLE BEAR CREEK-SAUSAGE FISH HABITAT RESTORATION PROJECT

80% DESIGN DRAWINGS

GRANDE RONDE MODEL WATERSHED
BEAR CREEK
GRANDE RONDE RIVER BASIN, OREGON

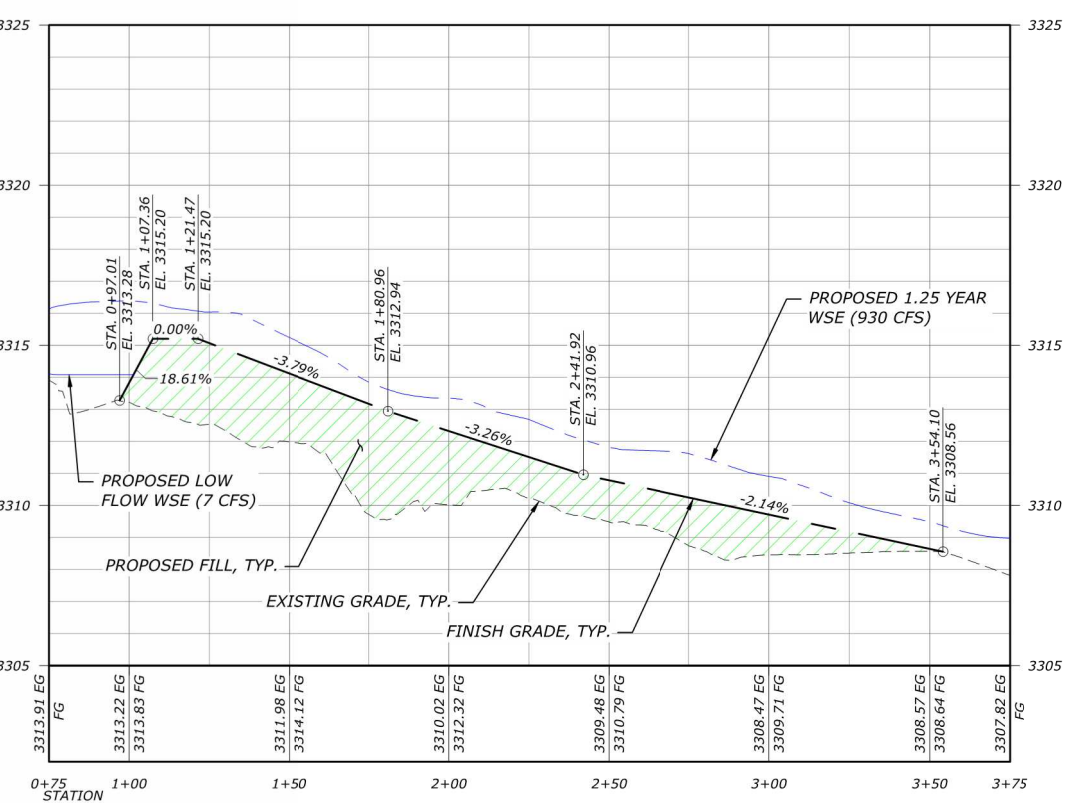
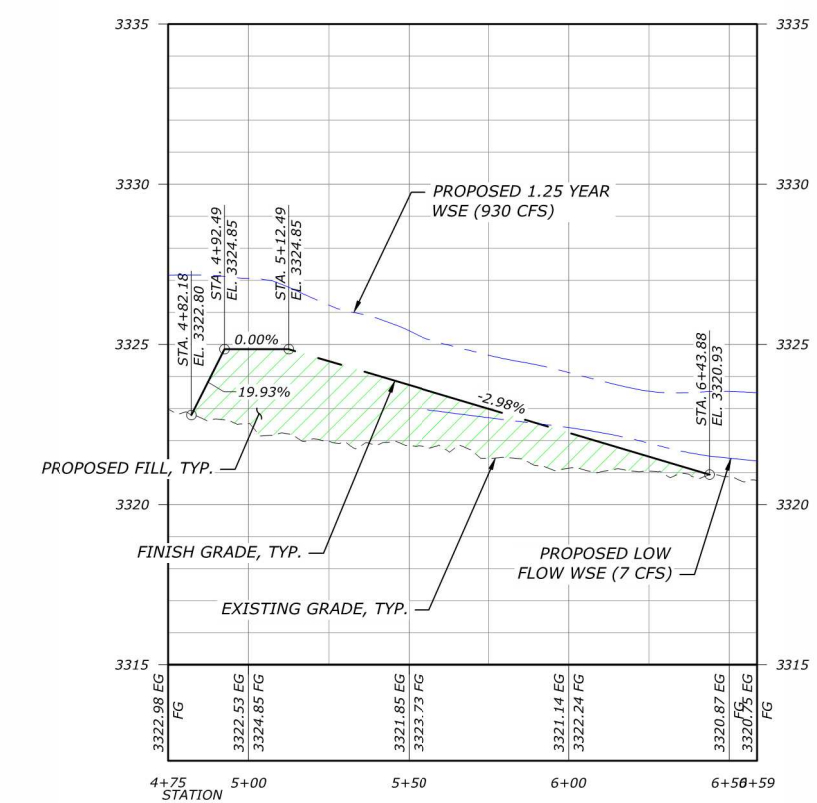
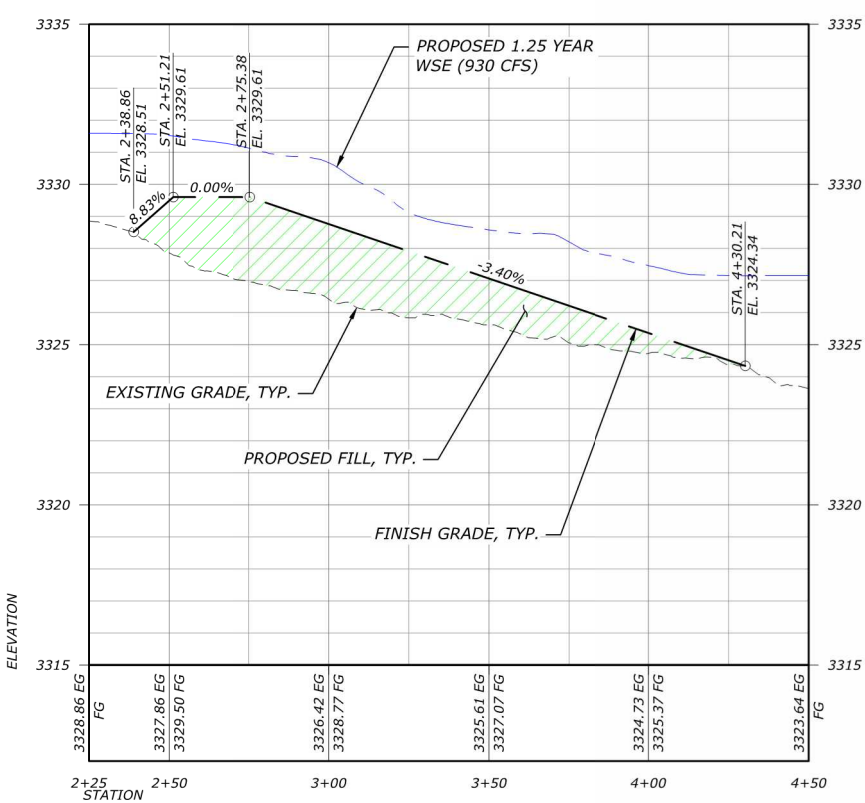
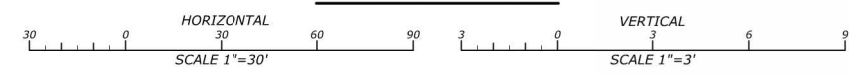
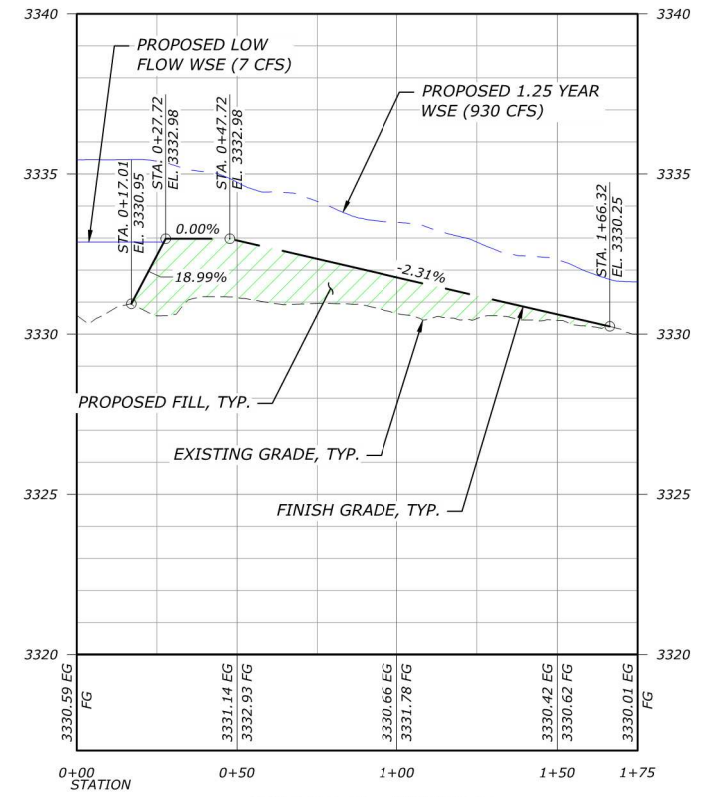
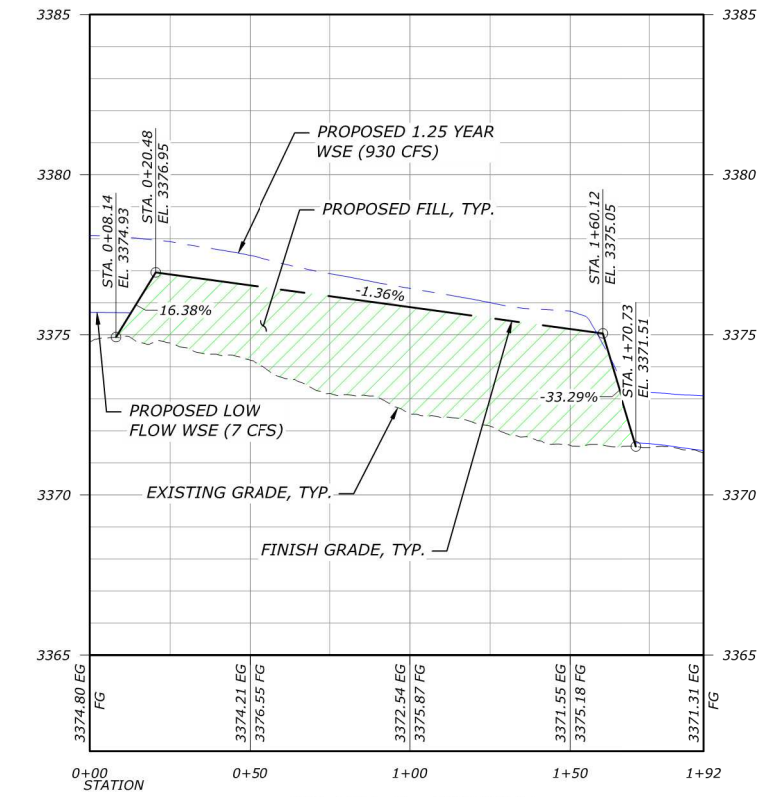
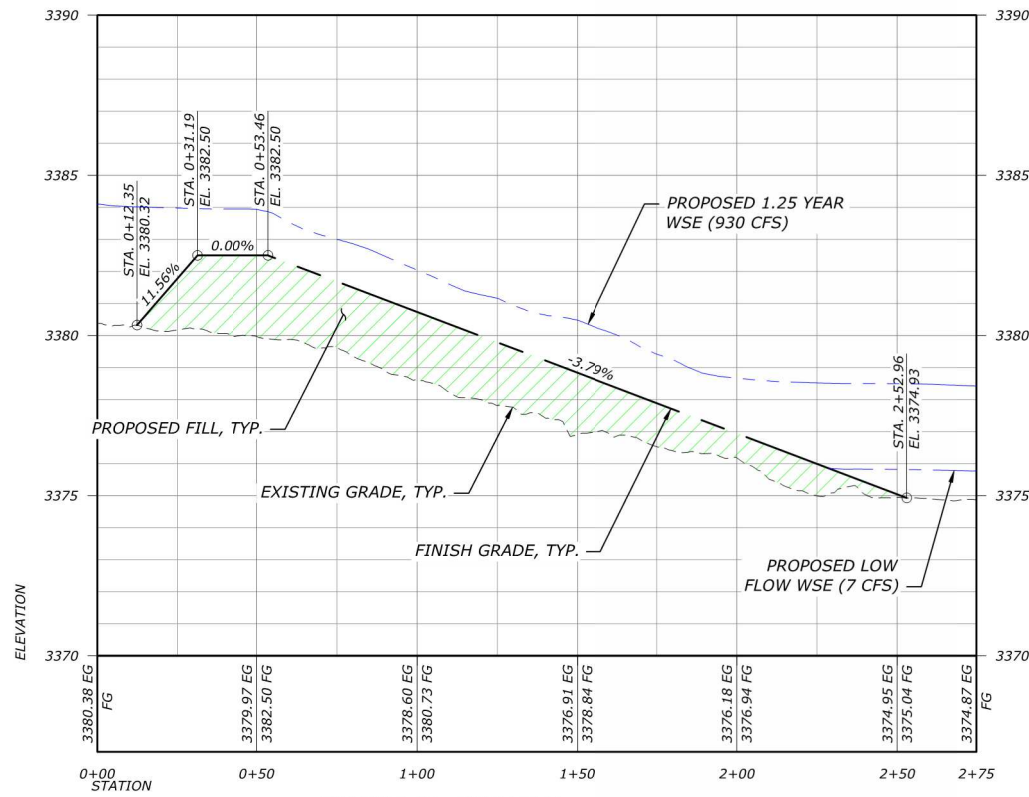
WORKING DRAFT FOR REVIEW AND REVISION

DATE: 10/15/2025
DESIGNED: JF, RR, ZS, MG
APPROVED: JF

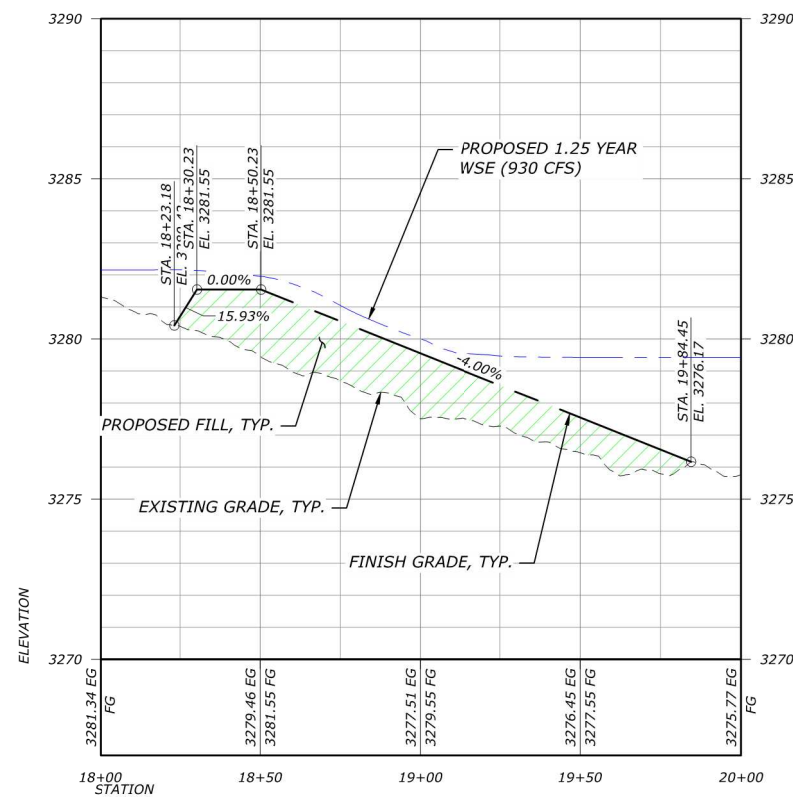
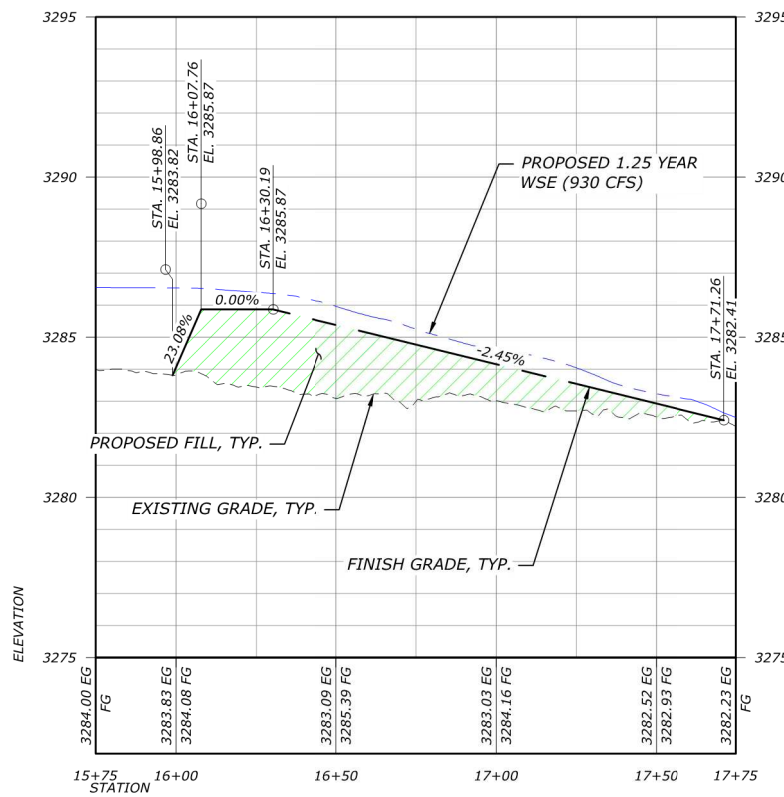
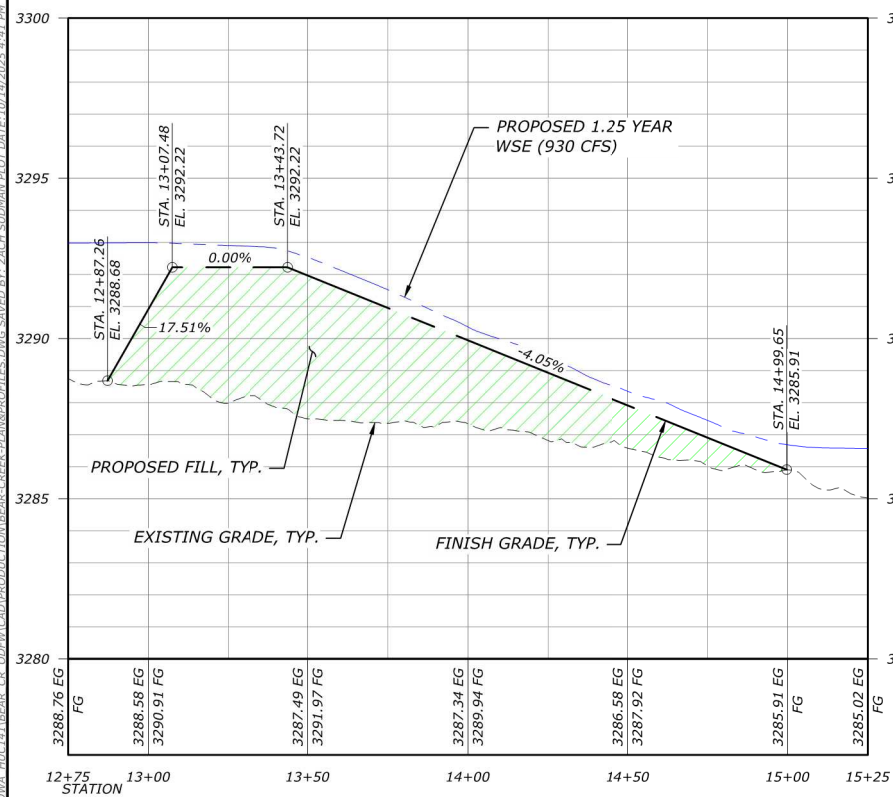
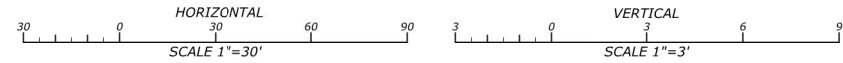
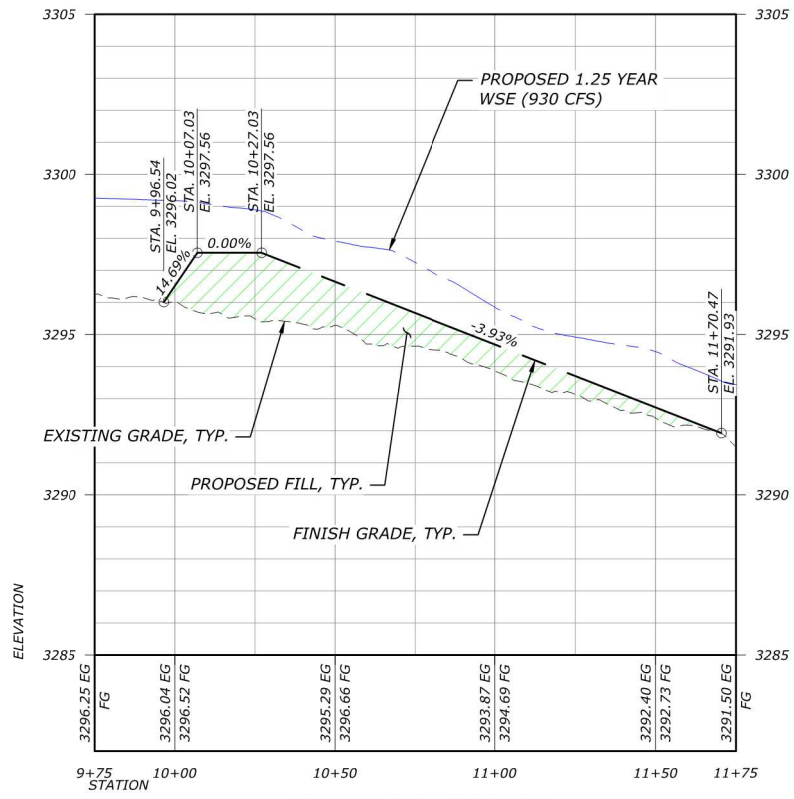
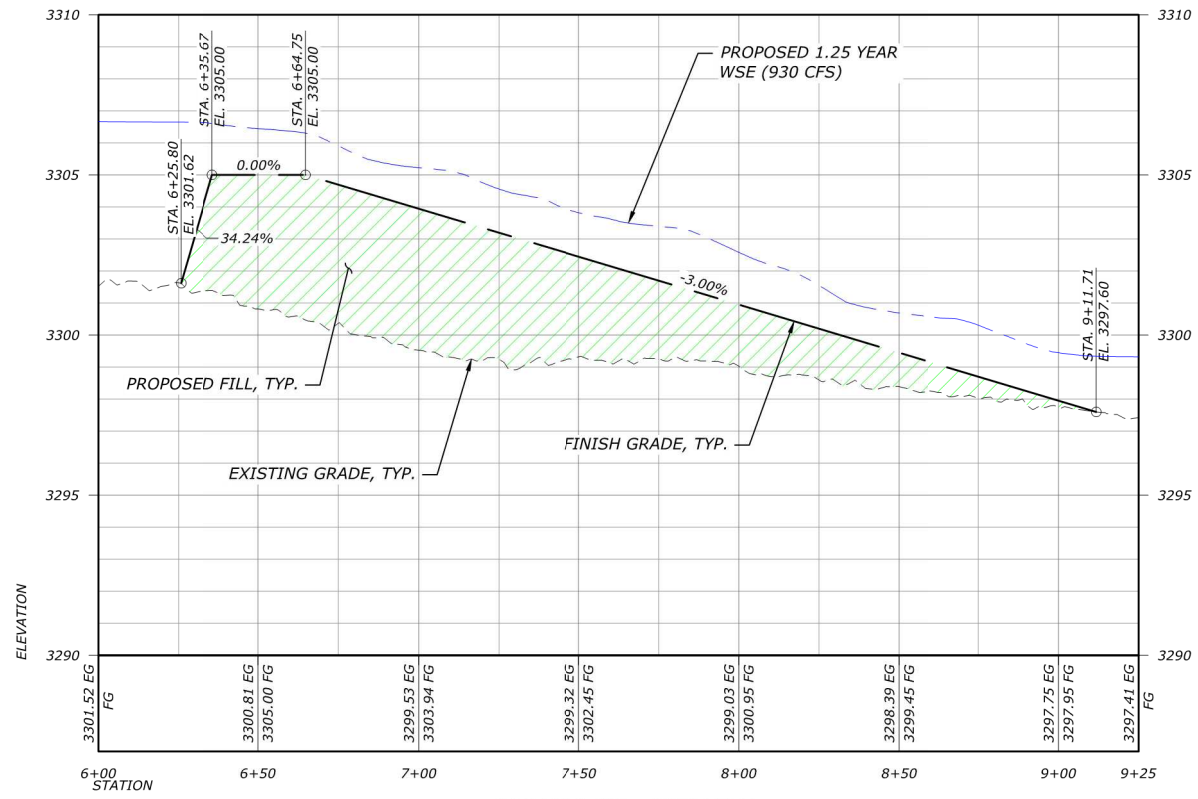
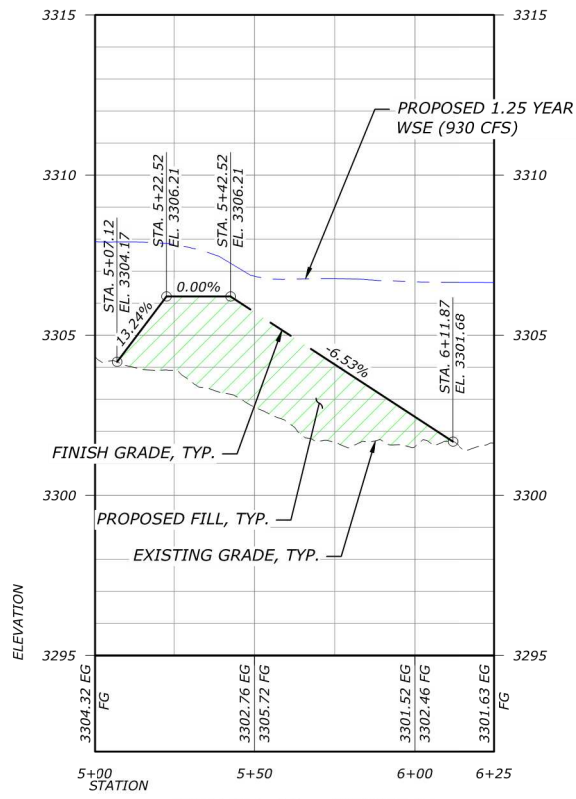
DRAWING NAME
PLAN & PROFILES

FILL PROFILES 5-10

DRAWING NO.
C23
SHEET 31 OF 57



FILE: R:\PROJECTS\WALLOWA_HUC141\BEAR_CR_ODEV\CAD\PRODUCT\DM\BEAR-CREEK-BLANK\PROFILES.DWG SAVED BY: ZACH SUDMAN PLOT DATE: 10/14/2025 4:40 PM



**WORKING DRAFT
FOR REVIEW AND
REVISION**

DATE: 10/15/2025
DESIGNED: JF, RR, ZS, MG
APPROVED: JF

DRAWING NAME
PLAN & PROFILES

FILL PROFILES 11-16

DRAWING NO.
C24
SHEET 32 OF 57

FILE: R:\PROJECTS\WALLOWA_HUC141\BEAR_CR...PRODUCTION\BEAR-CREEK-BLANK\PROFILES.DWG SAVED BY: ZACH SUDMAN PLOT DATE: 10/14/2025 4:41 PM

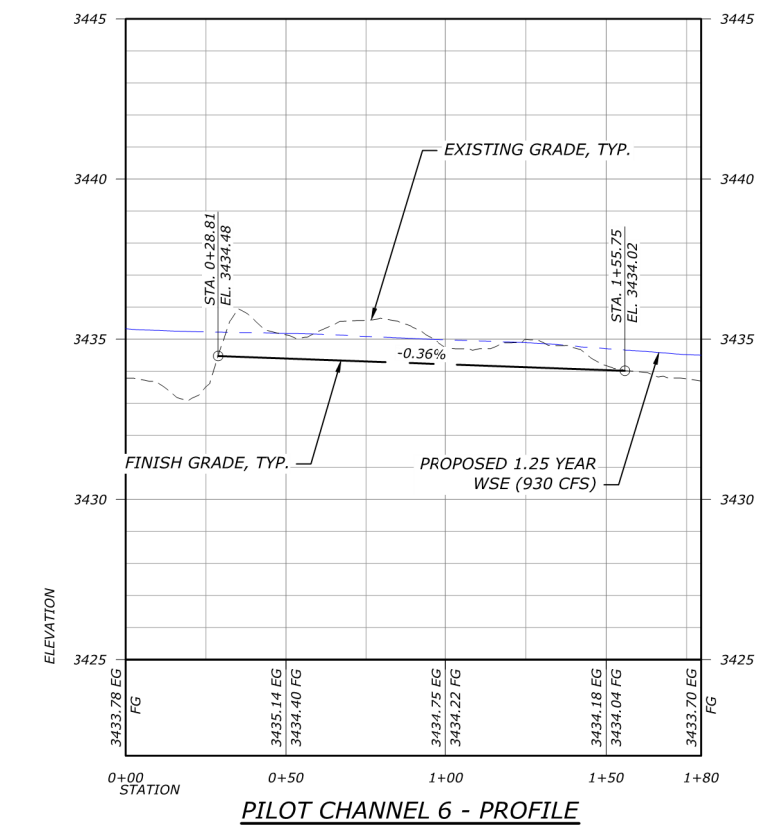
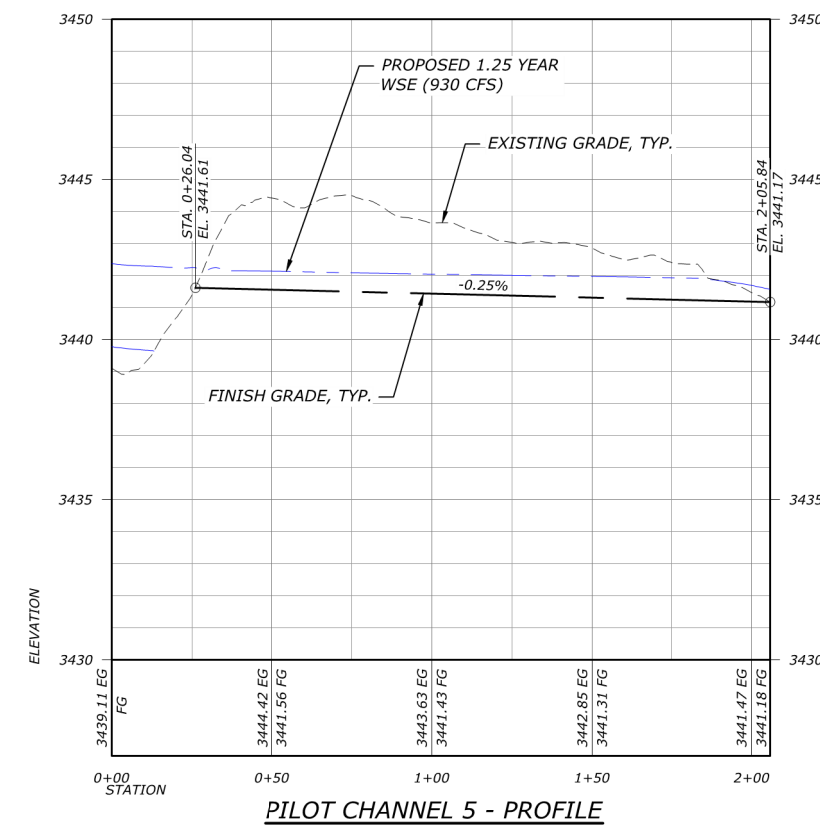
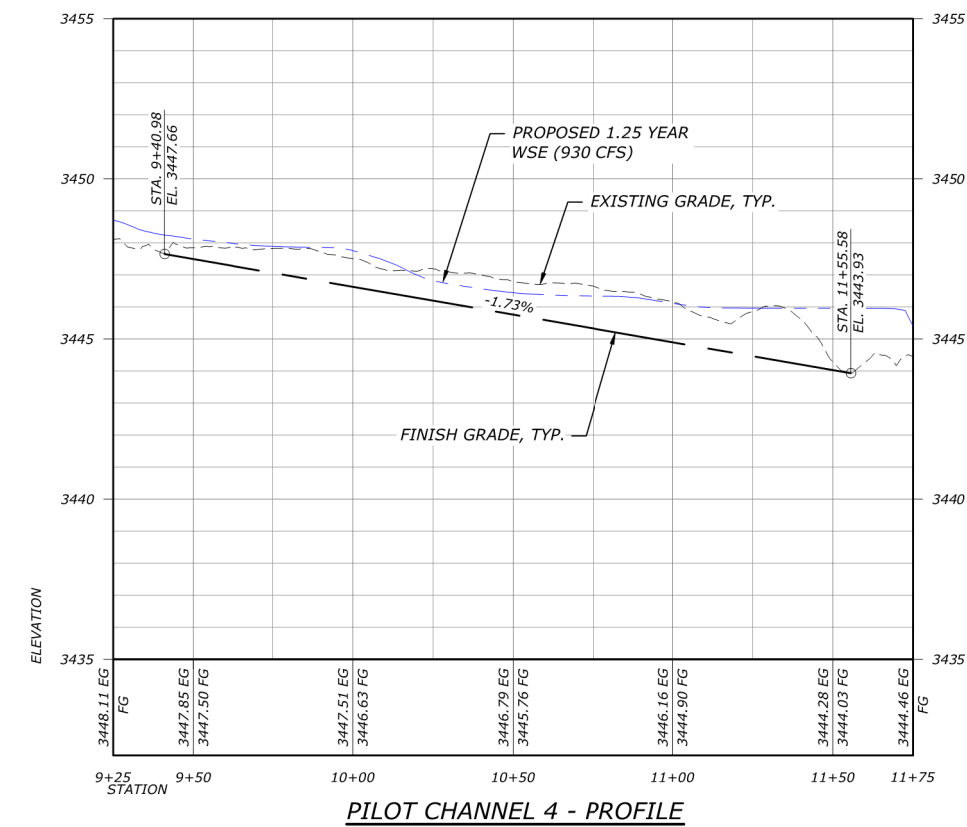
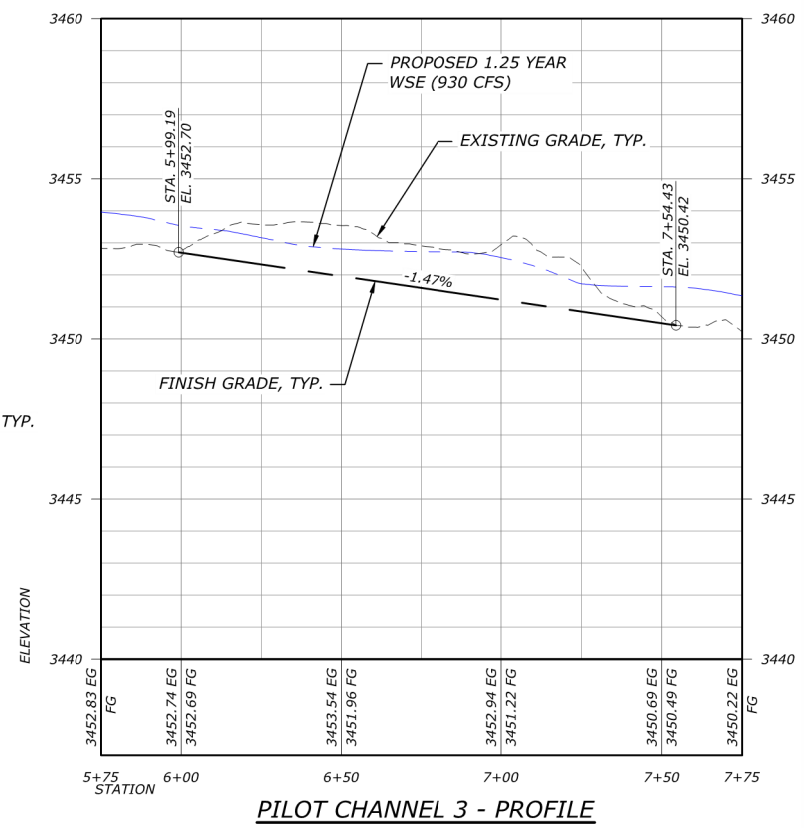
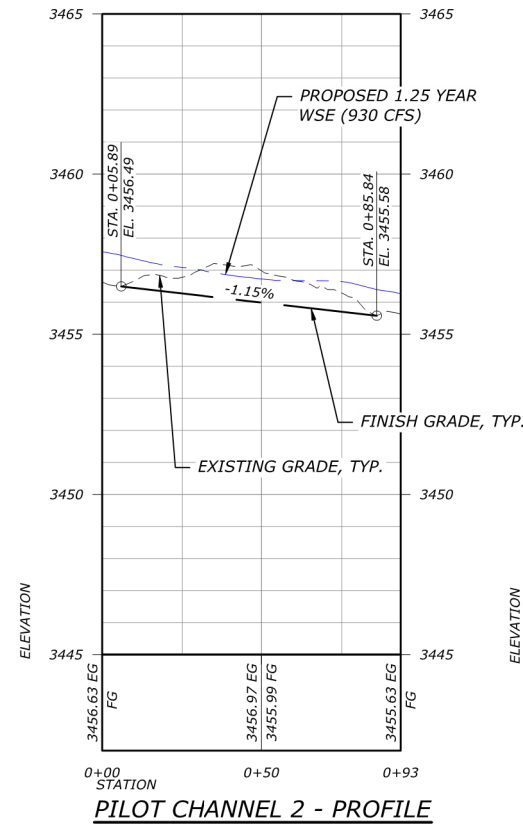
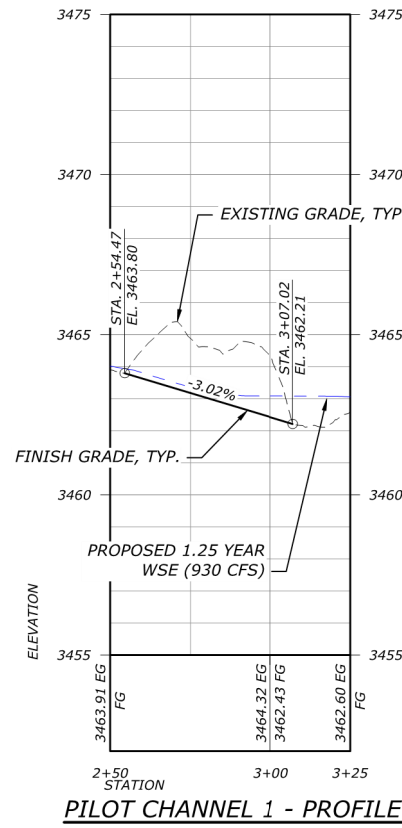
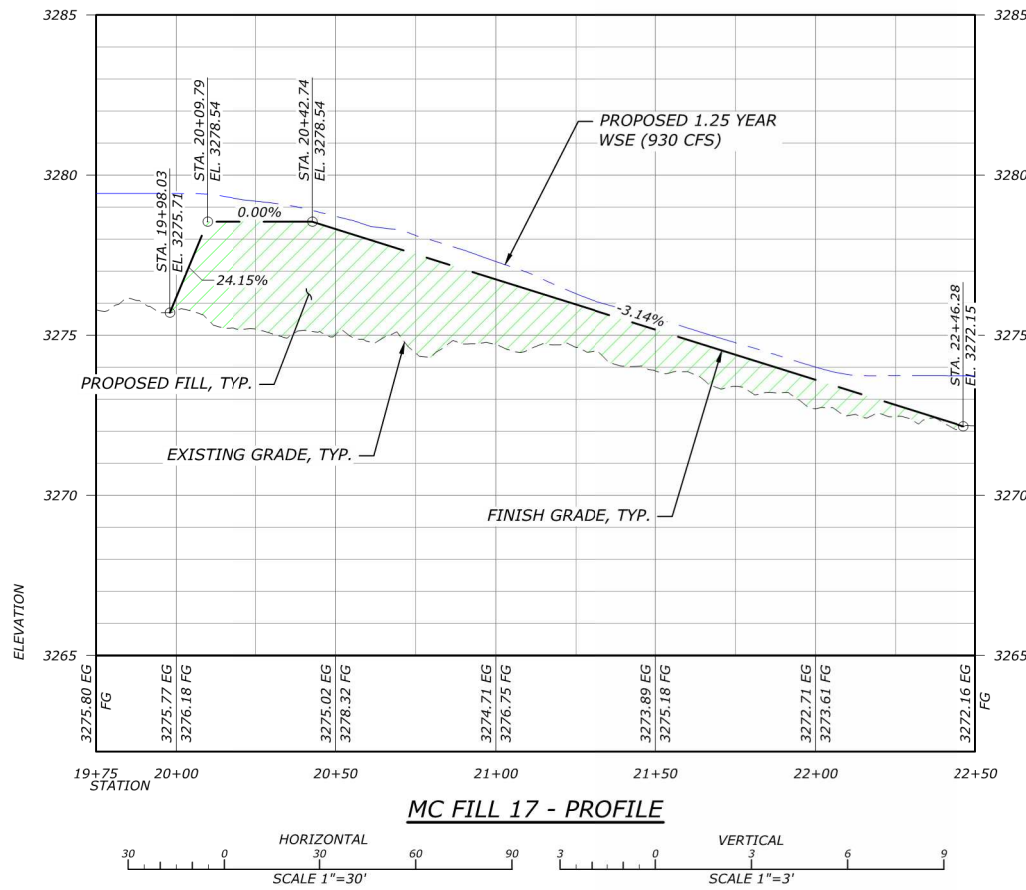
**WORKING DRAFT
FOR REVIEW AND
REVISION**

DATE: 10/15/2025
DESIGNED: JF, RR, ZS, MG
APPROVED: JF

DRAWING NAME
PLAN & PROFILES

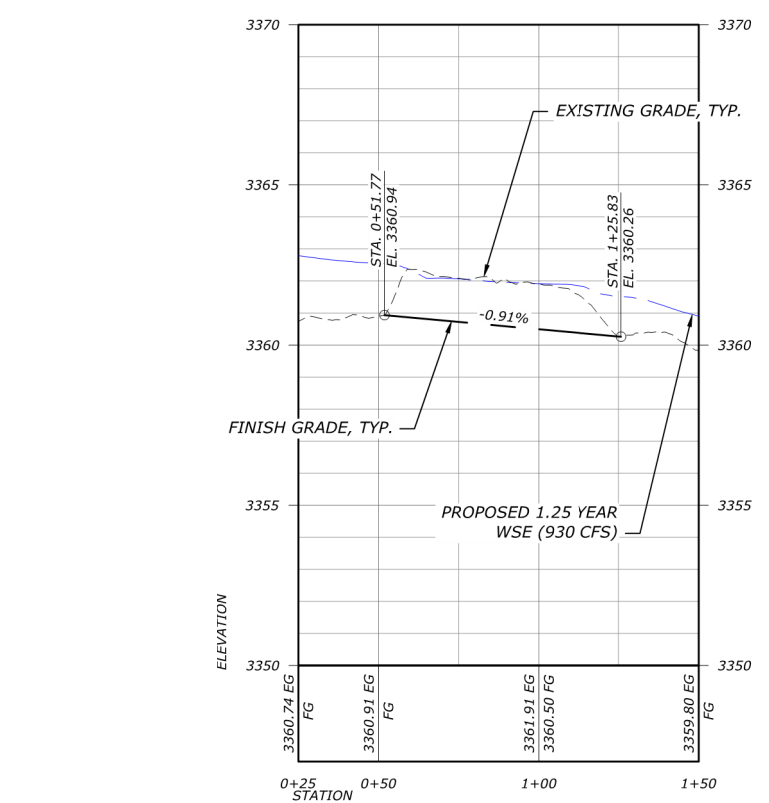
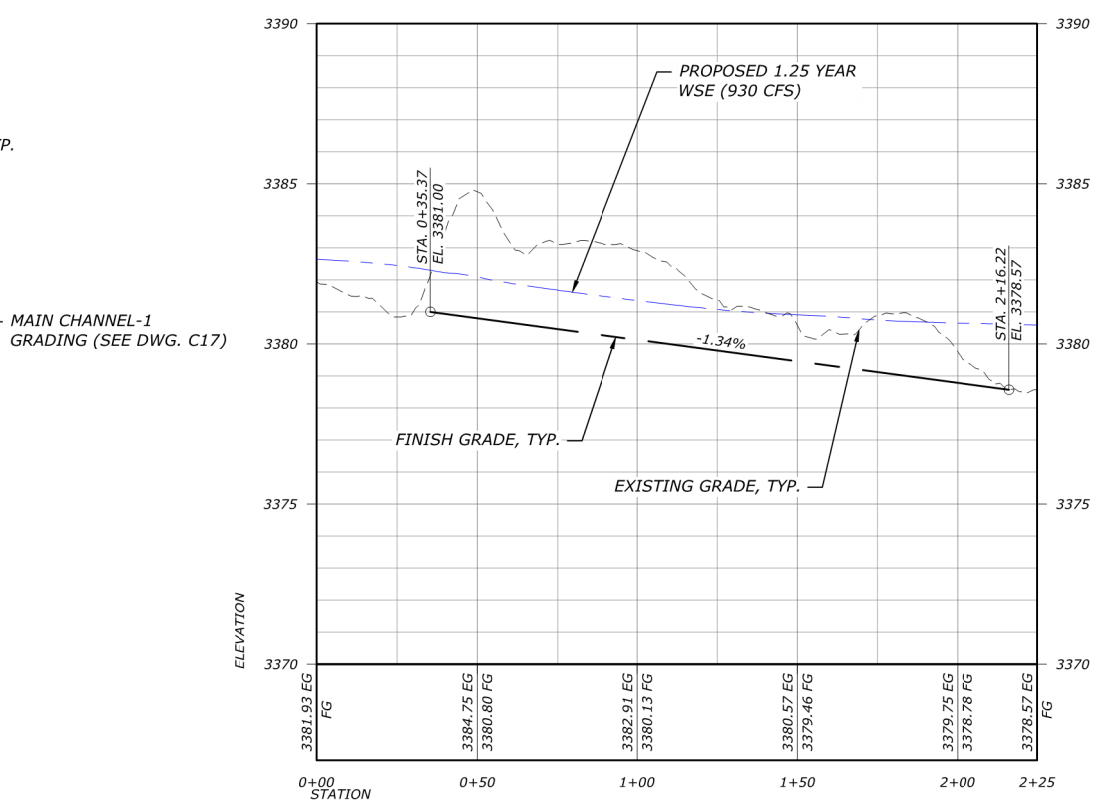
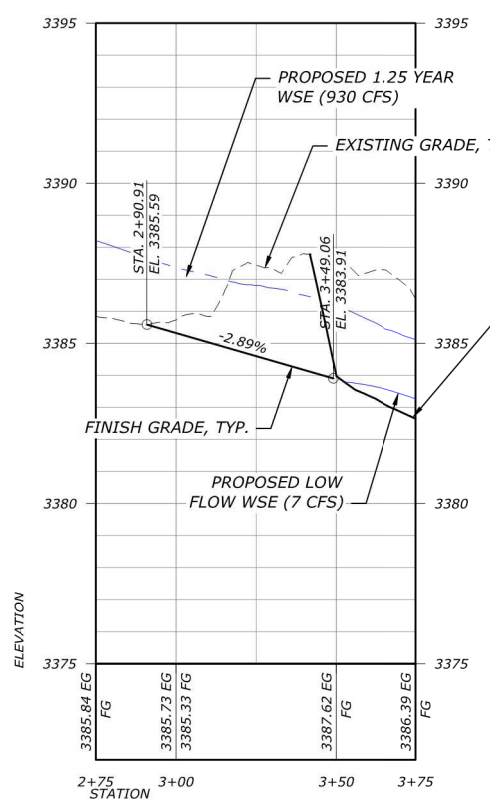
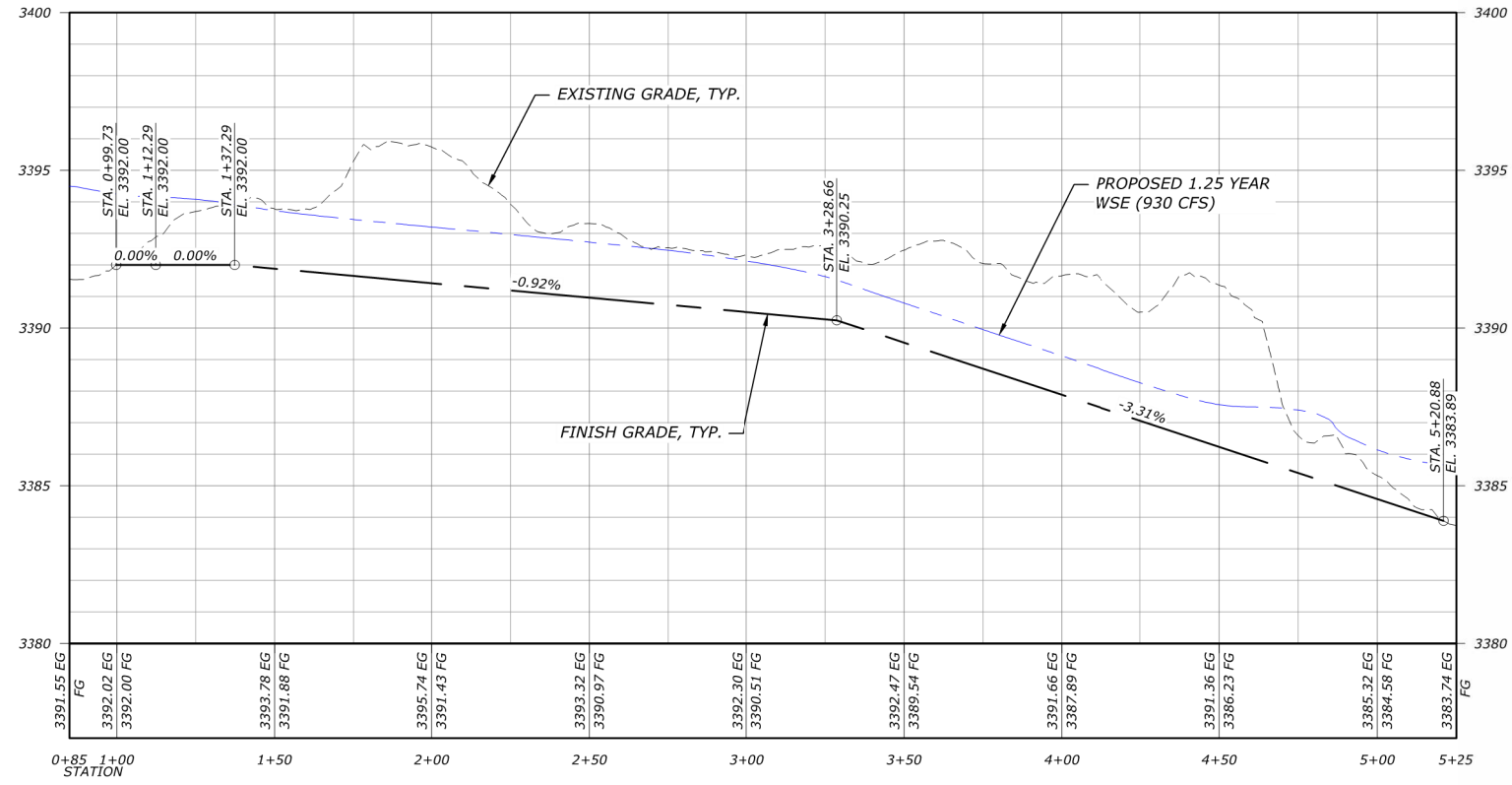
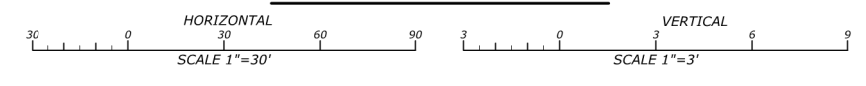
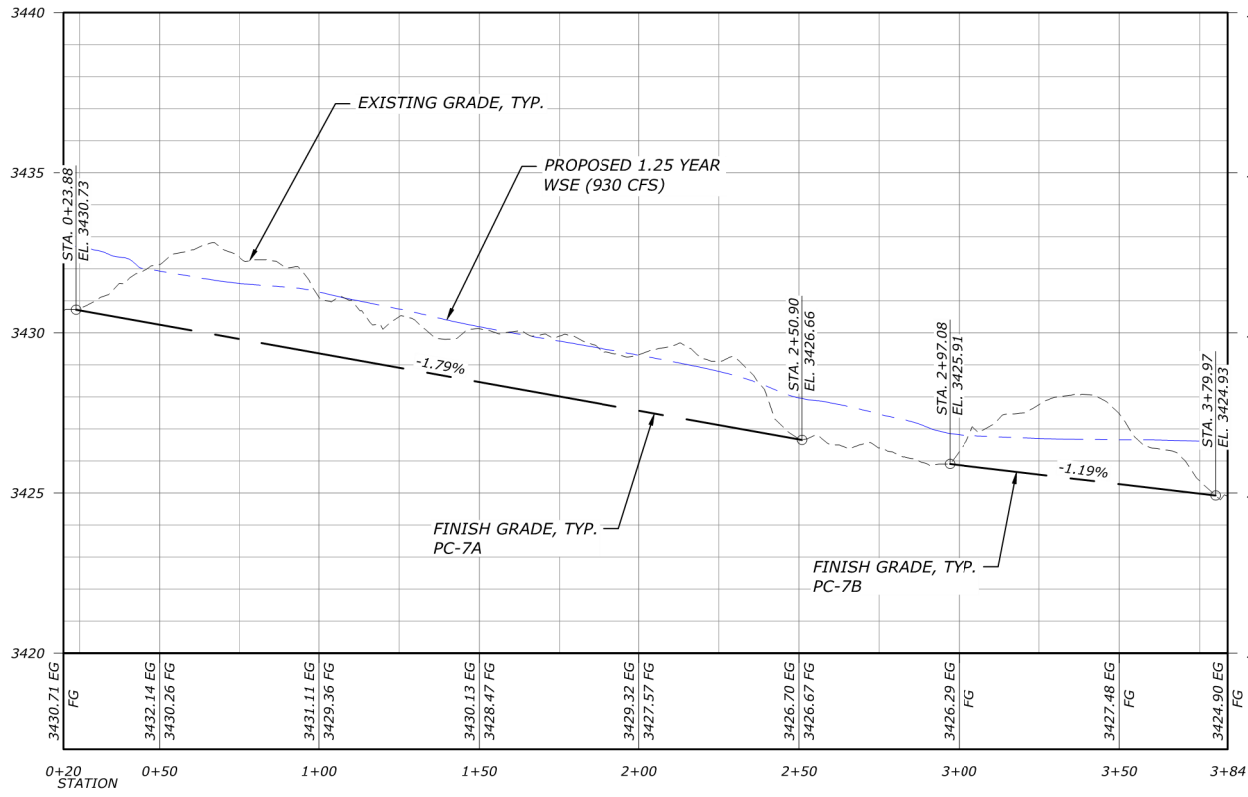
FILL PROFILE 17 & PILOT
CHANNELS 1-6

DRAWING NO.
C25
SHEET 33 OF 57



FILE: R:\PROJECTS\WALLOWA_HUC141\BEAR_CR_ODEVLCAD\PRODUCT\ION\BEAR-CREEK-PLAN\PROFILES.DWG SAVED BY: ZACH SUDMAN PLOT DATE: 10/14/2025 4:43 PM

FILE: R:\PROJECTS\WALLOWA_HIUC141\BEAR_CR_ODEV\CAD\PRODUCT\MAIN\BEAR-CREEK-PLAN\PROFILES.DWG SAVED BY: ZACH SUDMAN PLOT DATE: 10/14/2025 4:44 PM



BEAR CREEK & LITTLE BEAR CREEK-SAUSAGE FISH HABITAT RESTORATION PROJECT
80% DESIGN DRAWINGS
 GRANDE RONDE MODEL WATERSHED
 BEAR CREEK
 GRANDE RONDE RIVER BASIN, OREGON

WORKING DRAFT FOR REVIEW AND REVISION

DATE: 10/15/2025
 DESIGNED: JF, RR, ZS, MG
 APPROVED: JF
 DRAWING NAME
 PLAN & PROFILES

PILOT CHANNELS 7-11
 DRAWING NO.
 C26
 SHEET 34 OF 57

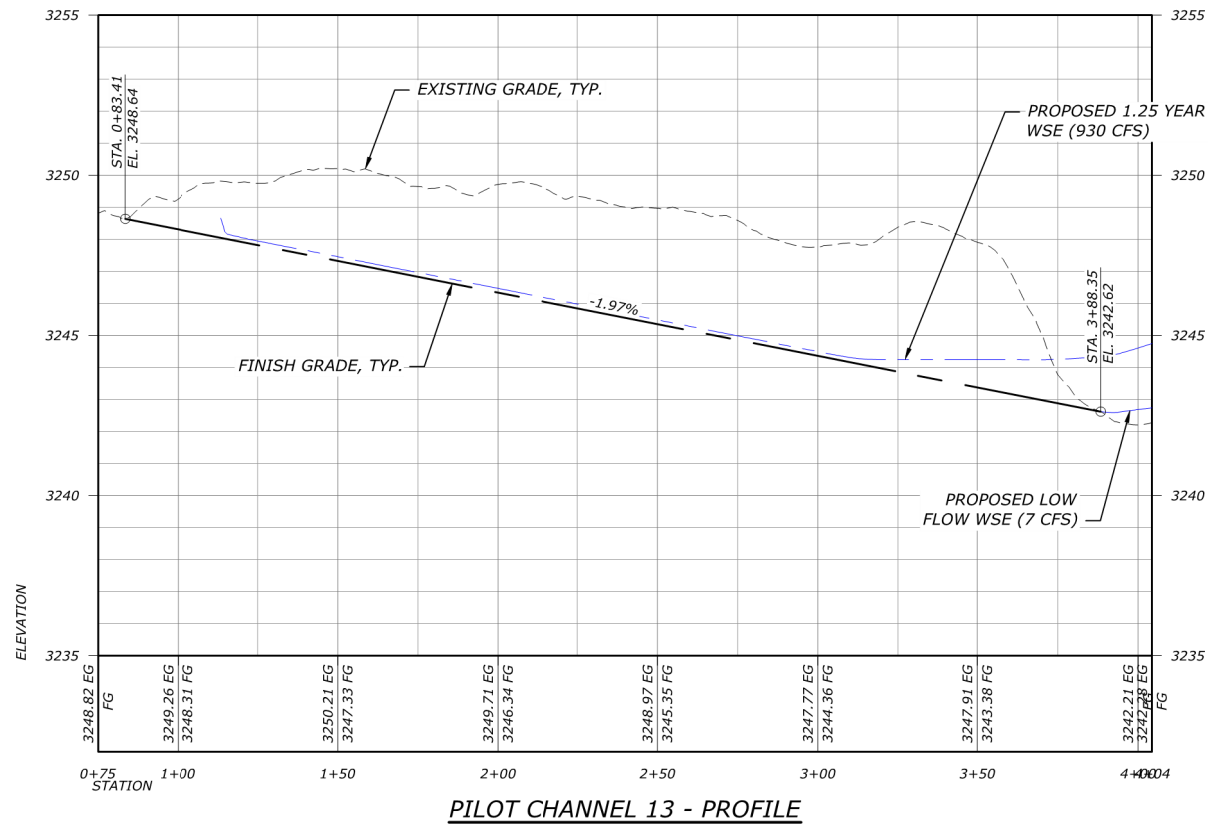
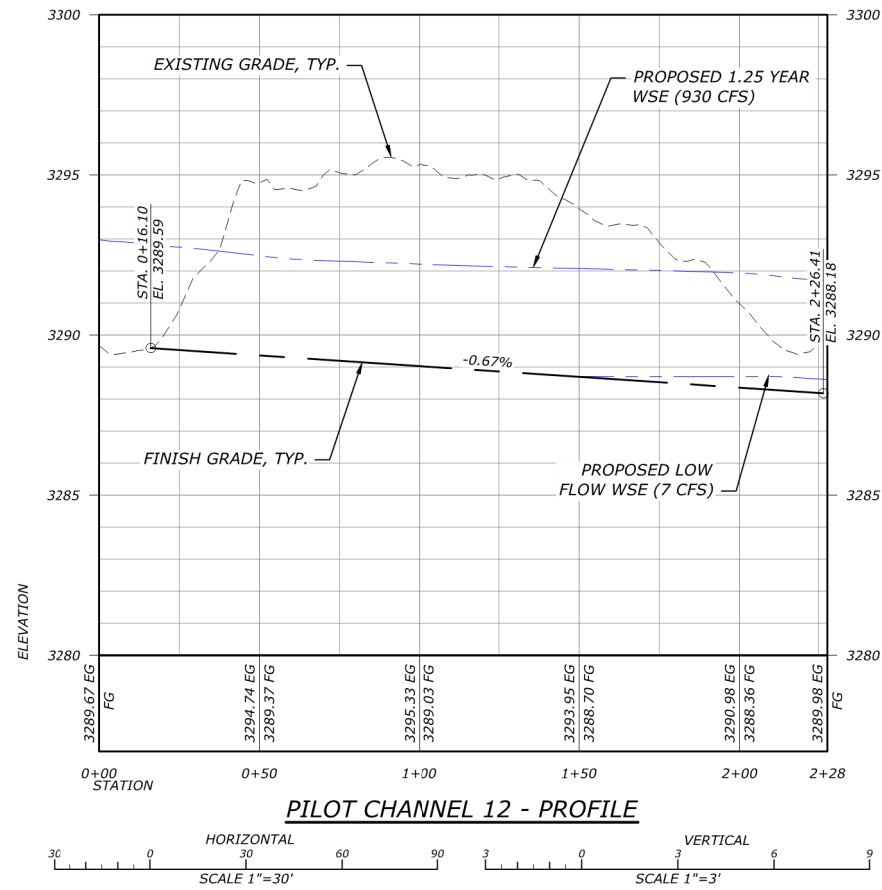
**WORKING DRAFT
FOR REVIEW AND
REVISION**

DATE: 10/15/2025
 DESIGNED: JF, RR, ZS, MG
 APPROVED: JF

DRAWING NAME
PLAN & PROFILES

**PILOT CHANNELS 12-13
& TYPICAL SECTION**

DRAWING NO.
C27
 SHEET 35 OF 57



CHANNEL	CHANNEL NAME	LENGTH (FT)	FLOW AT BANKFULL DISCHARGE (CFS)	% OF BANKFULL FLOW	SLOPE	RIFFLE DEPTH AT BANKFULL FLOW (FT)	WIDTH AT BANKFULL FLOW (FT)	WIDTH/DEPTH RATIO
PILOT CHANNELS	PC-1	53	1	0%	3.0%	0.1	8	80.0
	PC-2	80	7	1%	1.2%	0.7	12	17.1
	PC-3	155	11	1%	1.5%	0.74	12	16.2
	PC-4	215	11	1%	1.7%	0.7	12	17.1
	PC-5	180	4	0%	0.3%	0.5	13	26.0
	PC-6	127	11	1%	0.4%	0.7	13	18.6
	PC-7A	227	125	13%	1.8%	1.7	18	10.6
	PC-7B	83	23	2%	1.2%	1.13	16	14.2
	PC-8	421	116	12%	3.3%	1.8	20	11.1
	PC-9	58	85	9%	2.9%	2.3	20	8.7
	PC-10	181	141	15%	1.3%	2	19	9.5
	PC-11	74	52	6%	0.9%	1.4	15	10.7
	PC-12	210	357	38%	0.7%	3.2	36	11.3
PC-13	305	1	0%	2.0%	0.1	6	60.0	

