

LOOKINGGLASS CREEK RESTORATION PROJECT

#20220025

UNION COUNTY, OR

NOT FOR
CONSTRUCTION

WOLF WATER RESOURCES, INC.
1001 SE WATER AVE. SUITE #180
PORTLAND, OR 97214
503.207.6688

CONFEDERATED TRIBES OF THE
UMATILLA INDIAN RESERVATION
10507 NORTH McALISTER RD
ISLAND CITY, OR 97850
541.429.1941

CTUIR
LOOKINGGLASS CREEK
UNION, OR

VICINITY MAP & SHEET INDEX

REVISION NUMBER

No.	Date	Revision

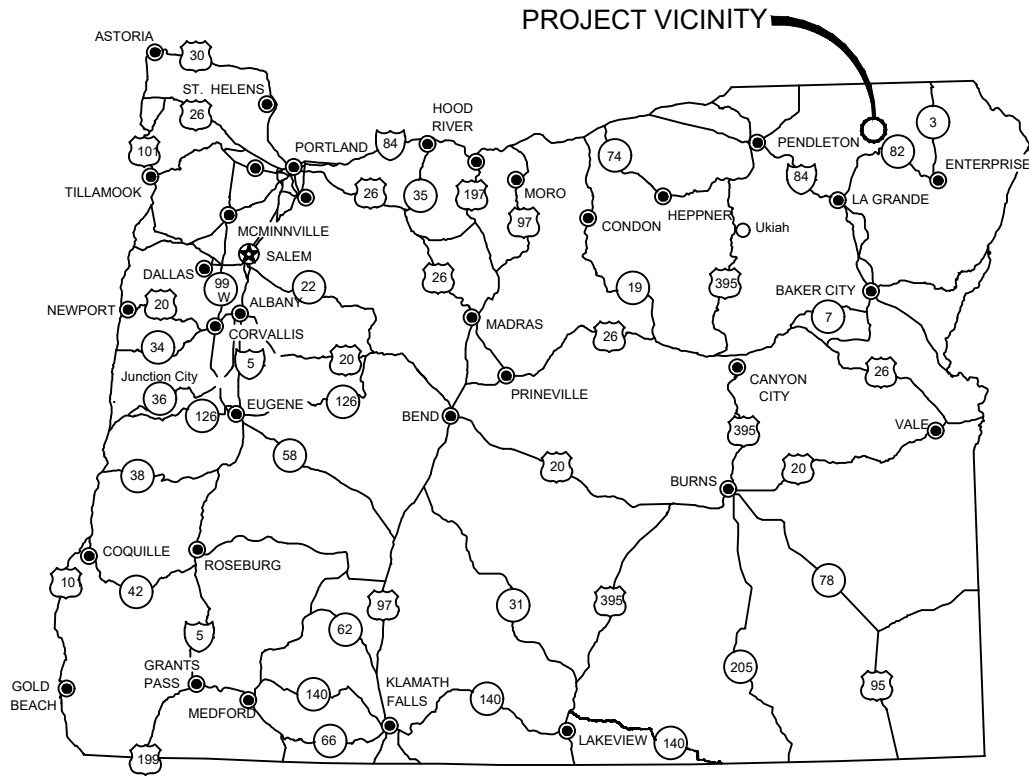
Date	Designed By
Drawn By	Checked By
DK, LH, BB	AJ

SCALE
0 1"

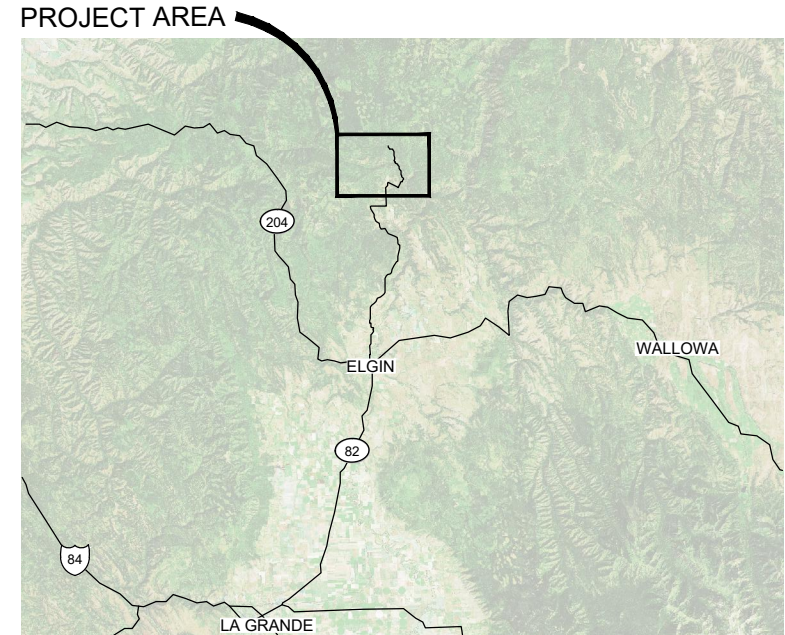
JOB NO.
20220025

SHEET NO.
G1.1

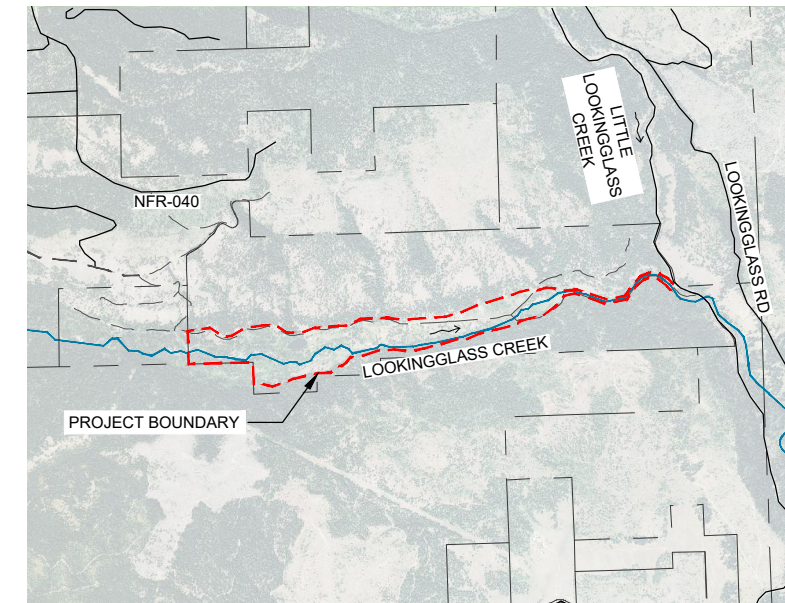
1 OF 34



REGIONAL MAP
NTS



PROJECT VICINITY
NTS



PROJECT AREA
NTS

PROJECT TEAM

PROJECT OWNER
CONFEDERATED TRIBES OF THE UMATILLA INDIAN RESERVATION (CTUIR)
46411 TI'MINE WAY
PENDLETON, OR 97801
(541) 429-7010

ENGINEER
WOLF WATER RESOURCES, INC
AJ JONES, PE
AJones@wolfwaterresources.com
1001 SE WATER AVE, SUITE #180
PORTLAND, OR 97214
(503) 207-6688

PROJECT INFO

SPATIAL REFERENCE
HORIZONTAL:
NAD 83 OREGON STATE PLANE
(POLYCONIC) NORTH ZONE, US FT
VERTICAL: NAVD88

PROJECT SITE LOCATION:
ELGIN, OR, 97827
UNION COUNTY
LATITUDE: 45.75045°
LONGITUDE: -117.87669°
WATERBODY: LOOKINGGLASS CREEK

SHEET INDEX

SHEET NUMBER	SHEET NAME	SHEET DESCRIPTION	SHEET NUMBER	SHEET NAME	SHEET DESCRIPTION
1	G1.1	VICINITY MAP & SHEET INDEX	18	C3.2	SECTIONS 2
2	G1.2	NOTES & ABBREVIATIONS	19	C4.1	GRADING DETAILS 1
3	G2.1	HIP CONSERVATION NOTES 1	20	C4.2	GRADING DETAILS 2
4	G2.2	HIP CONSERVATION NOTES 2	21	C4.3	WHS DETAILS 1
5	G2.3	HIP CONSERVATION NOTES 3	22	C4.4	WHS DETAILS 2
6	C1.1	EXISTING CONDITIONS OVERVIEW	23	C4.5	WHS DETAILS 3
7	C2.0	PROPOSED ACCESS & STAGING OVERVIEW	24	C4.6	WHS DETAILS 4
8	C2.1	PROPOSED CONDITIONS GRADING OVERVIEW	25	C4.7	WHS DETAILS 5
9	C2.2	PLAN & PROFILE 1	26	C4.8	WHS DETAILS 6
10	C2.3	PLAN & PROFILE 2	27	C4.9	WHS DETAILS 7
11	C2.4	PLAN & PROFILE 3	28	C5.1	BRIDGE SECTION
12	C2.5	PLAN & PROFILE 4	29	C6.1	WATER MANAGEMENT OVERVIEW
13	C2.6	PLAN & PROFILE 5	30	C6.2	TEMPORARY BYPASS SEQUENCING
14	C2.7	PLAN & PROFILE 6	31	C6.3	TEMPORARY BYPASS DETAIL
15	C2.8	ROADWAY PLAN & PROFILE 1	32	C6.4	TEMPORARY CROSSING DETAIL
16	C2.9	ROADWAY PLAN & PROFILE 2	33	C6.5	TEMPORARY EROSION CONTROL DETAILS
17	C3.1	SECTIONS 1	34	L1.1	SITE REVEGETATION PLAN


DWG: Z:\Shared\W21\CAD\2022\20220025-Lookingglass Creek (CTUIR)\DWG\SHEETS\G1_1-LGC-COVER.dwg USER: bbennett
 DATE: Apr 26, 2024 12:01pm XREFS:LGC_X-AERIAL X-TB-W21-2234 LGC_X-MAP-BASE

NOTES:

- EQUIPMENT SHALL NOT BE DRIVEN OUTSIDE THE ACCESS ROUTE.
- CONTRACTOR SHALL PROVIDE SECONDARY CONTAINMENT FOR ALL EQUIPMENT AND MATERIAL STORAGE IN STAGING AREAS WITHIN 150 FT OF STREAMS AND WETLANDS.
- ALL VEHICLE STAGING AREAS AND REFUELING AREAS SHALL BE ABOVE OHW.

NOT FOR
CONSTRUCTION


WOLF WATER RESOURCES, INC.
1001 SE WATER AVE. SUITE #180
PORTLAND, OR 97214
503.207.6888


CONFEDERATED TRIBES OF THE
UMATILLA INDIAN RESERVATION
10507 NORTH MALCOLM RD
ISLAND CITY, OR 97850
541.429.7541

CTUIR
LOOKINGGLASS CREEK
UNION, OR

EXISTING CONDITIONS OVERVIEW

REVISION NUMBER

No.	Date	Revision

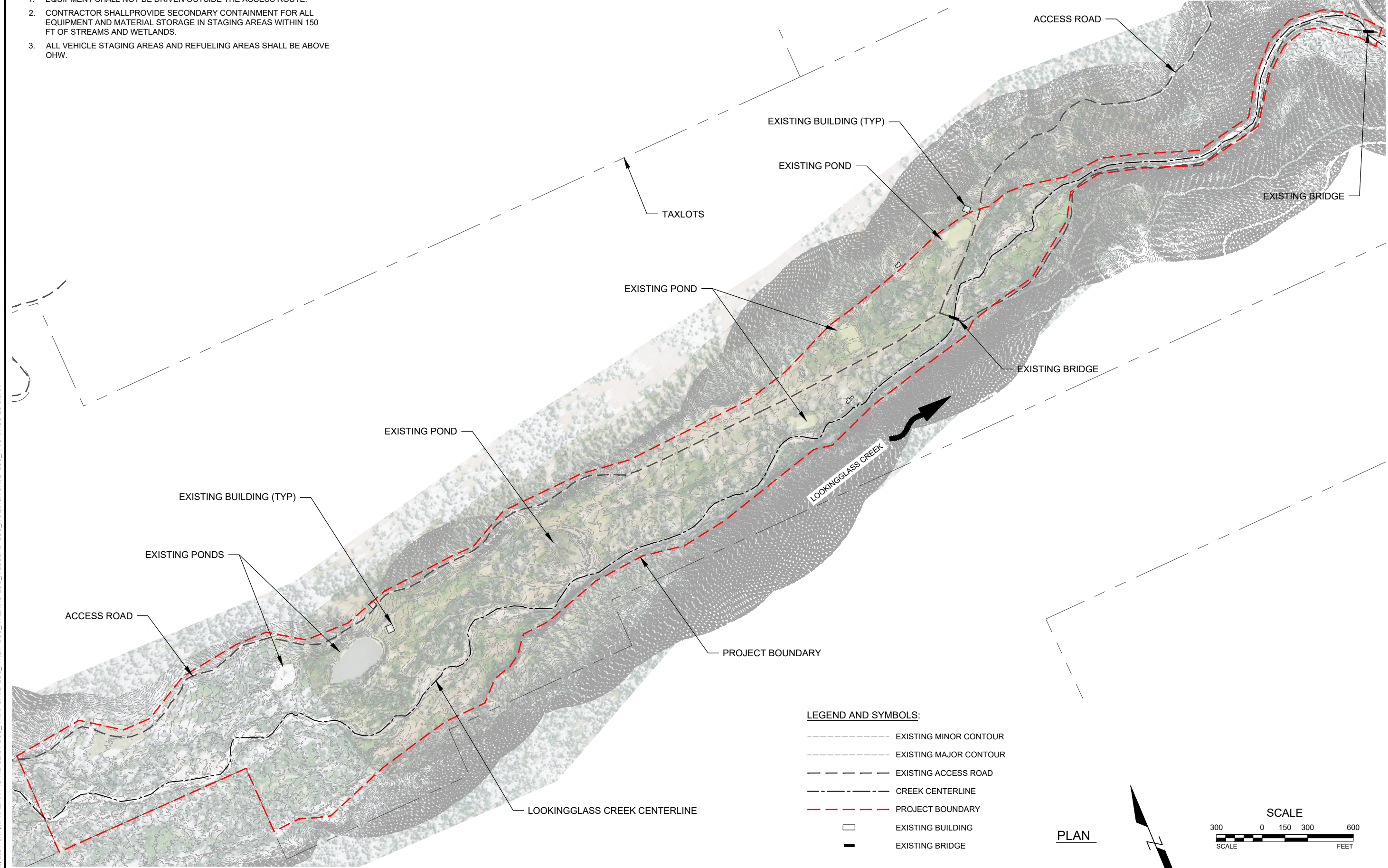
Date: Designed By: AJ
Drawn By: DK, LH, BB Checked By: AJ

SCALE
0 1"

JOB NO. 20220025

SHEET NO. C1.1

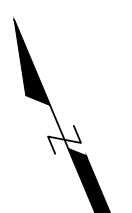
6 OF 34



LEGEND AND SYMBOLS:

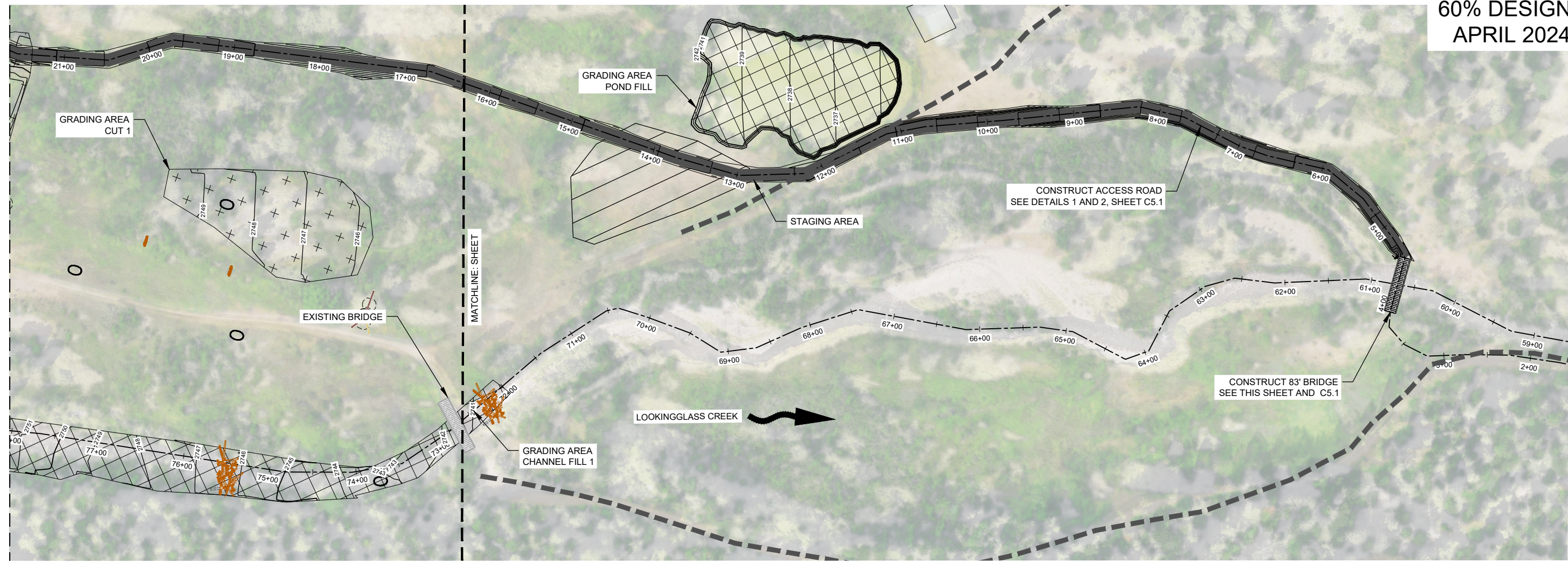
- EXISTING MINOR CONTOUR
- EXISTING MAJOR CONTOUR
- EXISTING ACCESS ROAD
- CREEK CENTERLINE
- PROJECT BOUNDARY
- EXISTING BUILDING
- EXISTING BRIDGE

PLAN



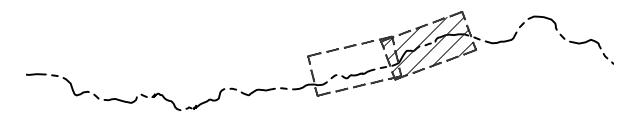
DWG: Z:\Shared\W2\CAD\2022\0025-lookingglass creek (ctuir)\DWG\SHEETS\LGC-C1.0 - EXISTING.dwg USER: bbennett
 DATE: Apr 26, 2024 3:17pm XREFS: X-TB-W2-22x34 LGC_X-MAP-BASE LGC_X-REM LGC_X-AERIAL LGC_X-LEGEND LGC_X-SURFACE-EG LIDAR

NOT FOR
CONSTRUCTION



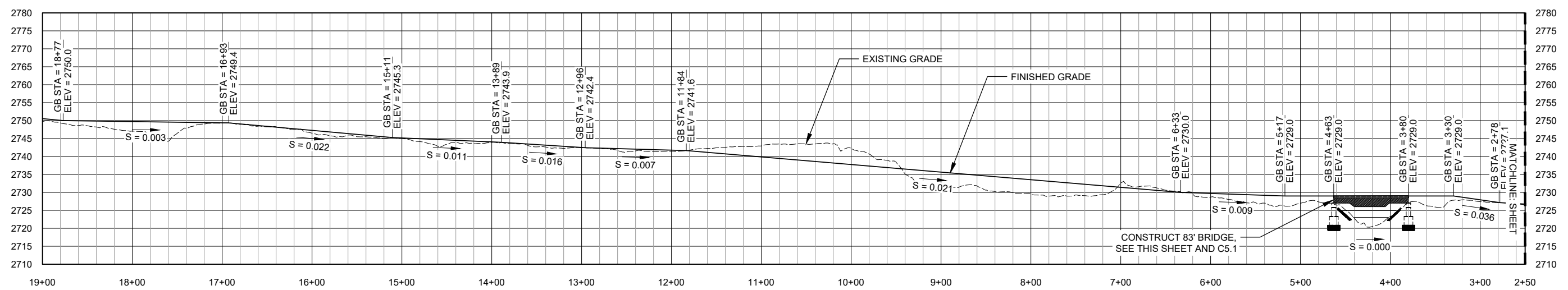
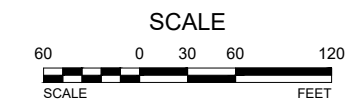
NOTES:

1. AREAS TO BE CLEARED AND GRUBBED WILL BE FLAGGED PRIOR TO CONSTRUCTION.
2. CONSTRUCT ACCESS ROAD PER ROADWAY SECTION DETAILS 1 AND 2 ON SHEET C5.1.



KEY MAP
SCALE: 1" = 2000'

PLAN



PROPOSED ROADWAY PROFILE

SCALE: HORIZONTAL 1" = 80'
SCALE: VERTICAL 1" = 20'

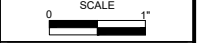
CTUIR
LOOKINGGLASS CREEK
UNION, OR

ROADWAY PLAN & PROFILE 1

REVISION NUMBER

No.	Date	Revision

Date: _____ Designed By: AJ
Drawn By: DK, LH, BB Checked By: AJ



JOB NO. 20220025

SHEET NO. C2.8

DWG: Z:\Shared\W21\CAD\20220025-lookingglass creek (ctuir)\DWGSHEETS\LGC - ROAD PLAN & PROFILE.dwg USER: bbenneitt
 DATE: Apr 26, 2024 3:29pm XREFS: X-TB-W21-22x34 LGC_X-AERIAL LGC_X-WHS LGC_X-DESIGN-BASE LGC_X-MAP-BASE LGC_X-LEGEND