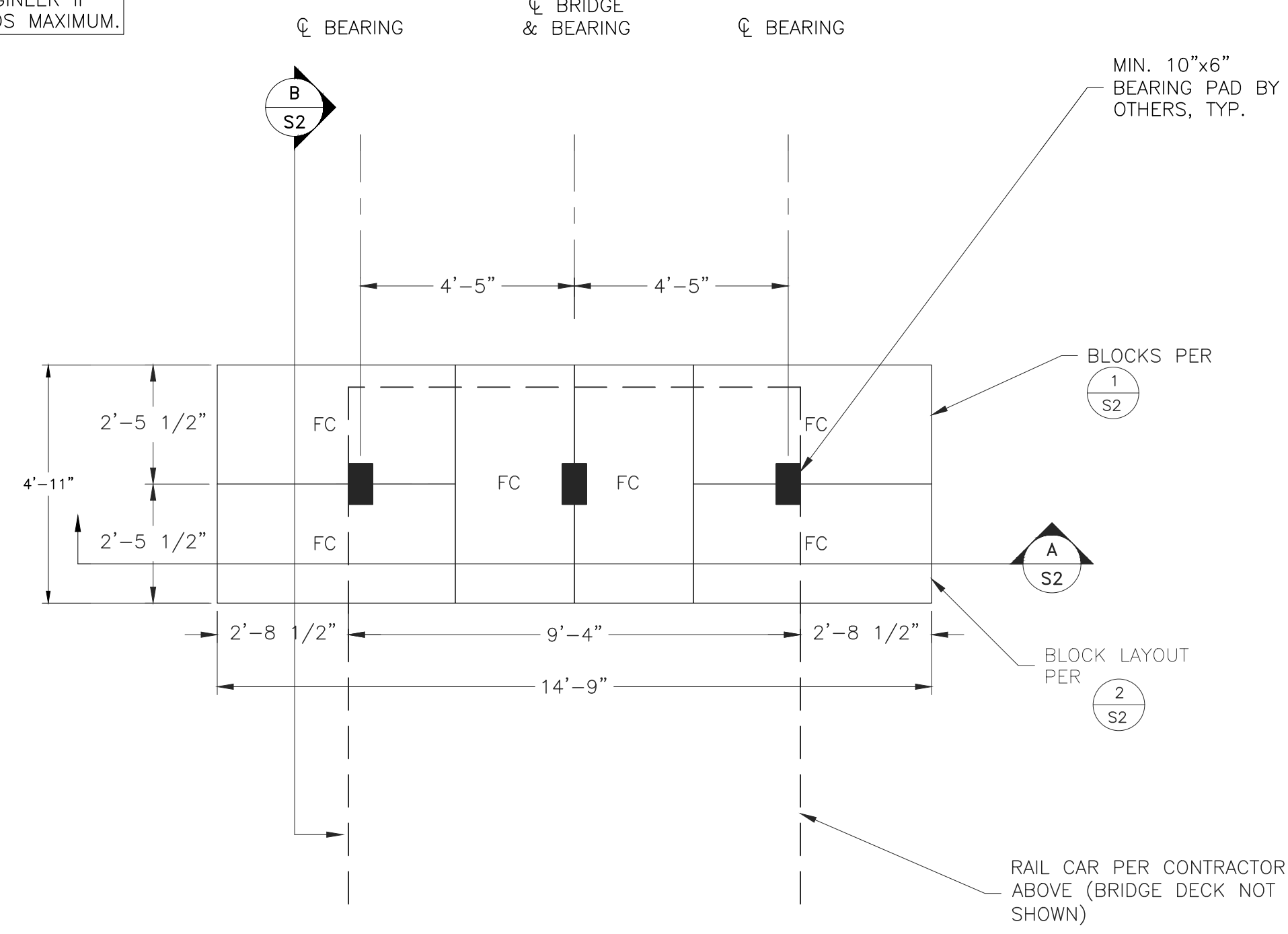
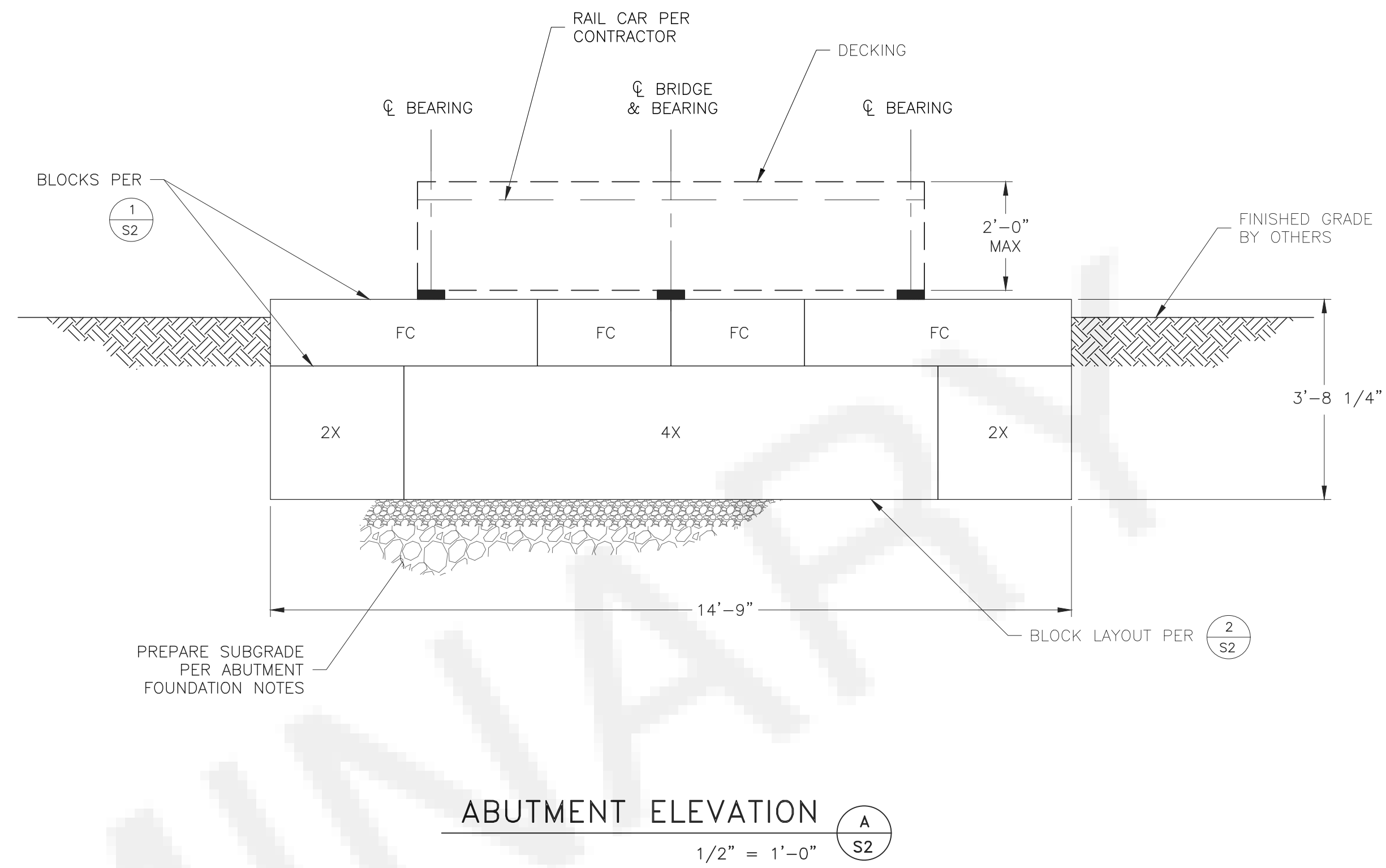


NOTE: MAX RAIL CAR WEIGHT OF 53,000 LB. CONTACT ENGINEER IF RAIL CAR WEIGHT EXCEEDS MAXIMUM.



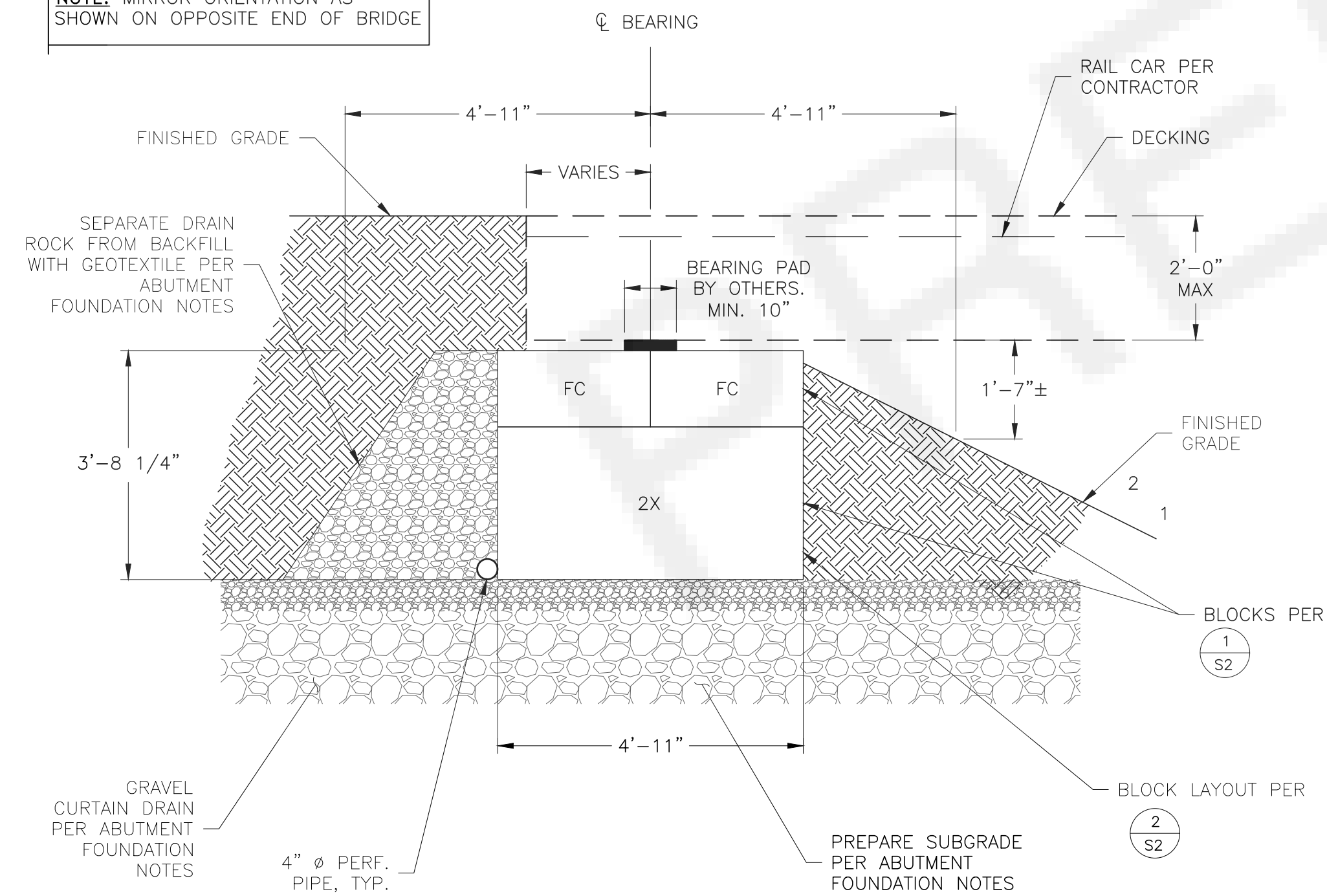
ABUTMENT PLAN



ABUTMENT ELEVATION

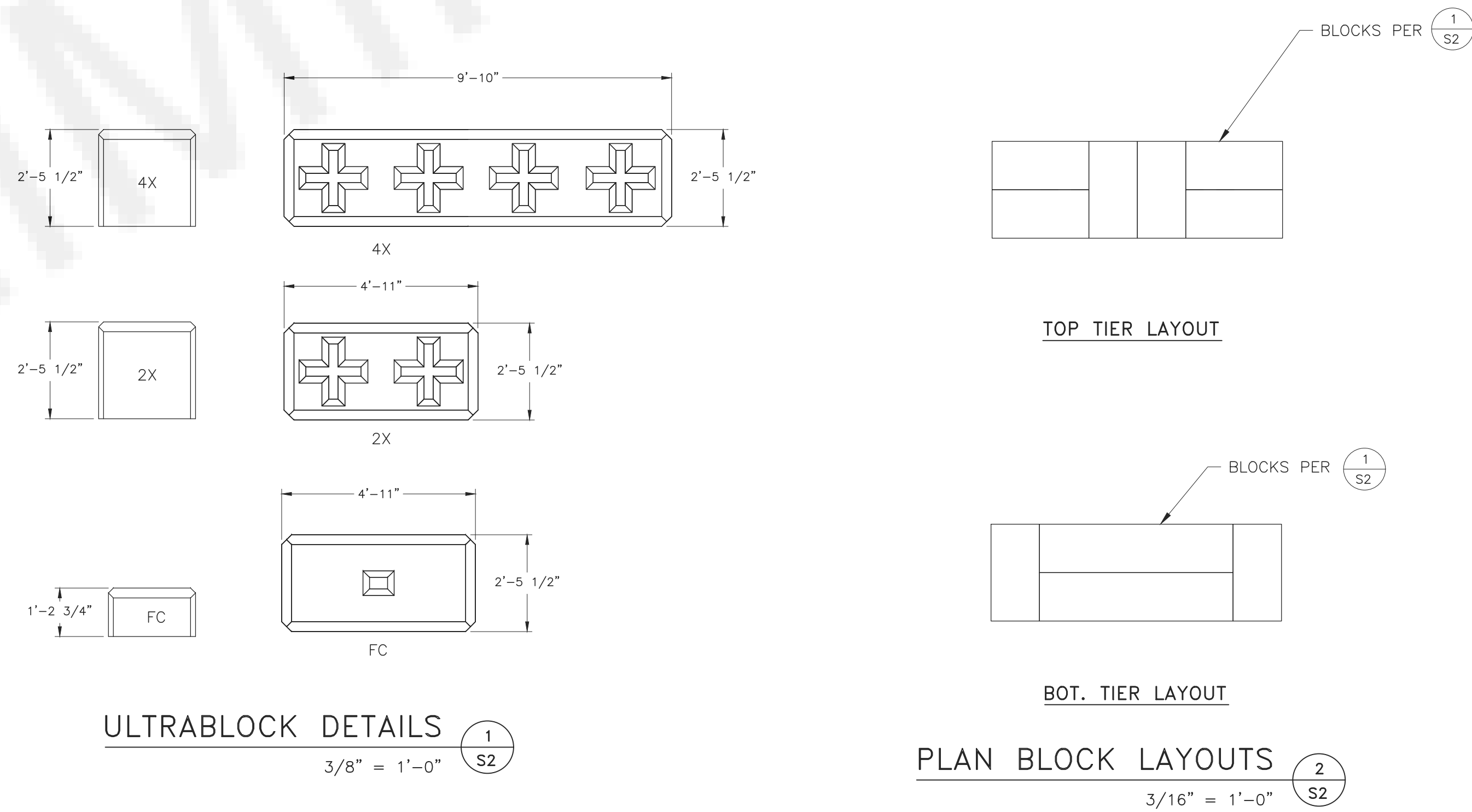
1/2" = 1'-0"

NOTE: MIRROR ORIENTATION AS SHOWN ON OPPOSITE END OF BRIDGE



ABUTMENT SECTION

1/2" = 1'-0"



ULTRABLOCK DETAILS

3/8" = 1'-0"

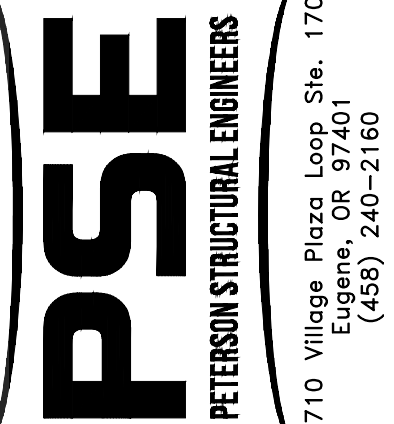
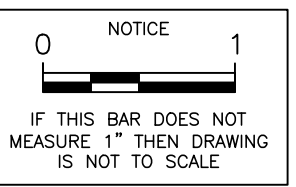
PLAN BLOCK LAYOUTS

3/16" = 1'-0"

ABUTMENT FOUNDATION NOTE(S):

SUBGRADE AND FILL TO BE PREPARED IN ACCORDANCE WITH GEOTECHNICAL REPORT. REQUIREMENTS INCLUDE BUT ARE NOT LIMITED TO THE FOLLOWING:

1. STRUCTURAL FILL
 - 1.1. THE BRIDGE ABUTMENTS SHOULD REST ON A 12" CRUSHED ROCK FILL PAD COMPOSED OF CSB.
 - 1.2. THE FILL PADS SHOULD BE COMPACTED TO A FIRM AND UNYIELDING CONDITION AND EXTEND OUTWARD AND DOWNWARD FROM THE OUTER EDGES OF THE ABUTMENTS BY AT LEAST 24"
 - 1.3. A WOVEN GEOTEXTILE MEETING THE REQUIREMENTS OF ODOT SS 02320.10 AND 02320.20, TABLE 02320-2 (TYPE 2 WOVEN) SHOULD BE PLACED BETWEEN THE FILL PAD AND NATURAL SOILS. INSTALLATION SHOULD BE IN CONFORMANCE WITH ODOT SS 0350.00
 - 1.4. A GRAVEL CURTAIN DRAIN MEETING THE REQUIREMENTS OF ODOT SS 00330.14 SHOULD BE PLACED DIRECTLY BEHIND THE ABUTMENTS. EXTEND GRAVEL AT LEAST 12" FROM VERTICAL FACES OF ABUTMENT.
 - 1.5. A WOVEN GEOTEXTILE SEPARATOR CONFORMING TO ODOT SS 2320.10 AND SS 02320.20, TABLE 02320-4 SHOULD BE PLACED BETWEEN THE GRAVEL CURTAIN DRAIN AND EMBANKMENT FILL SOIL.
 - 1.6. STRUCTURAL FILL SHOULD BE PLACED AND COMPACTED TO A MINIMUM OF 95% MAXIMUM DRY DENSITY PER ASTM D1557
2. NATIVE STRUCTURAL FILL
 - 2.1. ON SITE SOILS GENERALLY CONSIST OF WELL-GRADED GRAVEL WITH SAND, COBBLES, AND BOULDERS WITH LIMITED FINES. IF ON SITE MATERIALS ARE USED, THEY SHOULD MEET THE REQUIREMENTS FOR SELECTED GRANULAR BACKFILL PER ODOT SS 00330.14.
3. SCOUR PROTECTION
 - 3.1. SCOUR PROTECTION PER CIVIL



CLIENT INFO:
 WOLF WATER RESOURCES
 1001 SE WATER AVE, STE 180
 PORTLAND, OR 97214

PROJECT SITE:
 ELGIN, OR
 45.7505, -117.8767

SHEET CONTENT 2304-0017
PLANS, DETAILS, & SECTIONS

JOB No.
 2304-0017
 DRAWN RLKC CHECKED KES
 DATE 11/07/24
 REVISIONS

SHEET
 S2 OF 2