

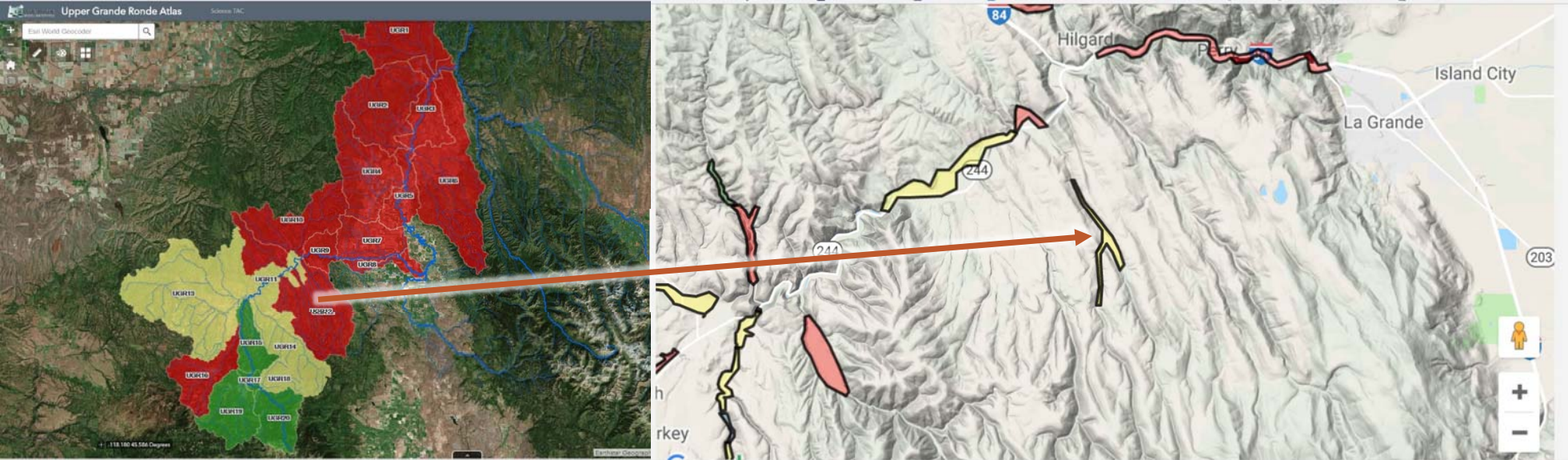
Whiskey Creek Courtney Ranch Restoration

JESSE STEELE – GRANDE RONDE MODEL WATERSHED

2018 STATE OF THE SCIENCE MEETING



Location



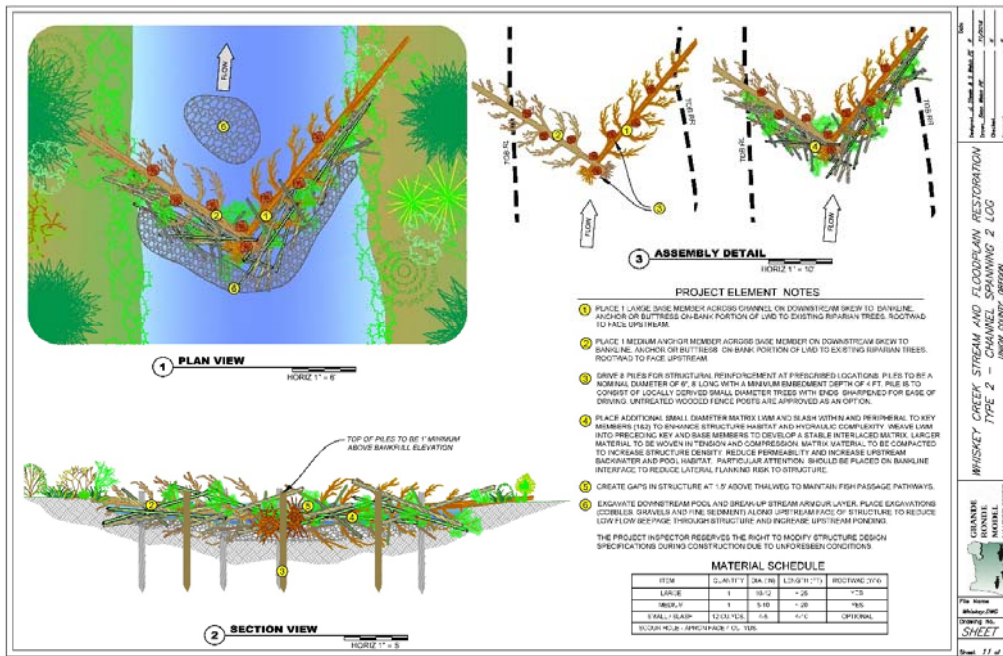
Why Whiskey Creek?

Fish Use & Life Stage Utilization

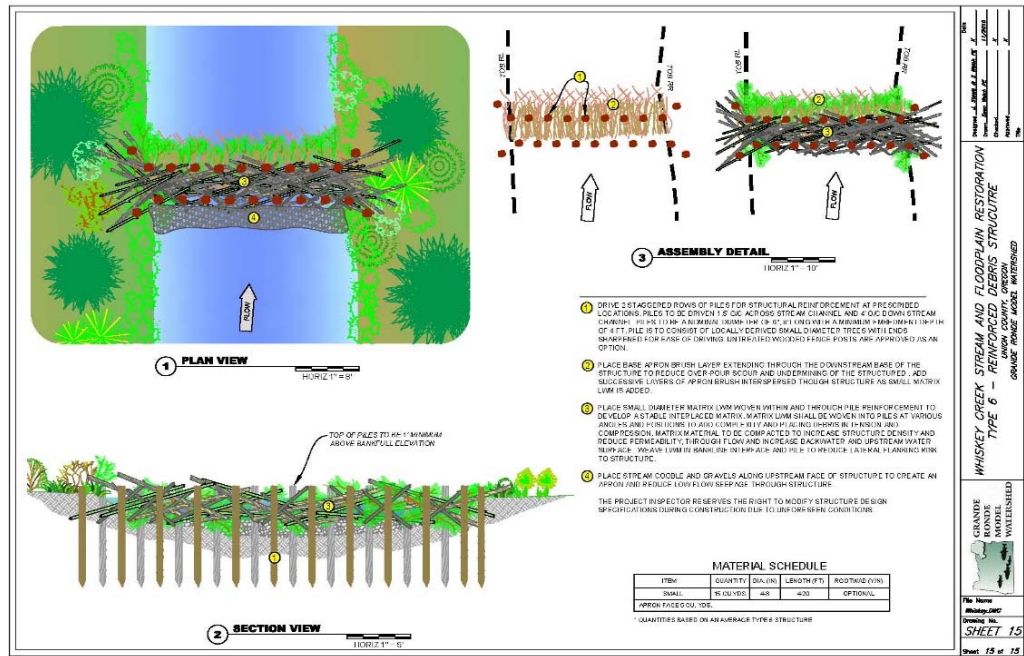
Fish Utilization	Scores			Comments
	Chinook	Steelhead	Bull Trout	
Adult Immigration	N/A	L	N/A	Some culverts that need replaced, HWY 244 Whiskey Creek and some on Lowes property (probably only juvenile barriers).
Adult Holding	N/A	L	N/A	Steelhead changed from M to L - consistent with survey data RCP
Spawning / Incubation / Emergence	N/A	H	N/A	STS emergence timing is critical due to these tribs mostly drying up during summer months (immediate actions needed).
Juvenile Emigration	N/A	L	N/A	
Summer Rearing	L	H	N/A	CHS specific to Rock Creek, M rating because it is not significant in terms of pop. recovery. Multiple age classes in these tribs - summer
Winter Rearing	L	M	N/A	Questions surrounding <i>O. mykiss</i> winter rearing locations (move down to mainstem?). Changed from N/A to L - rearing in lower portions of tr



Treatment

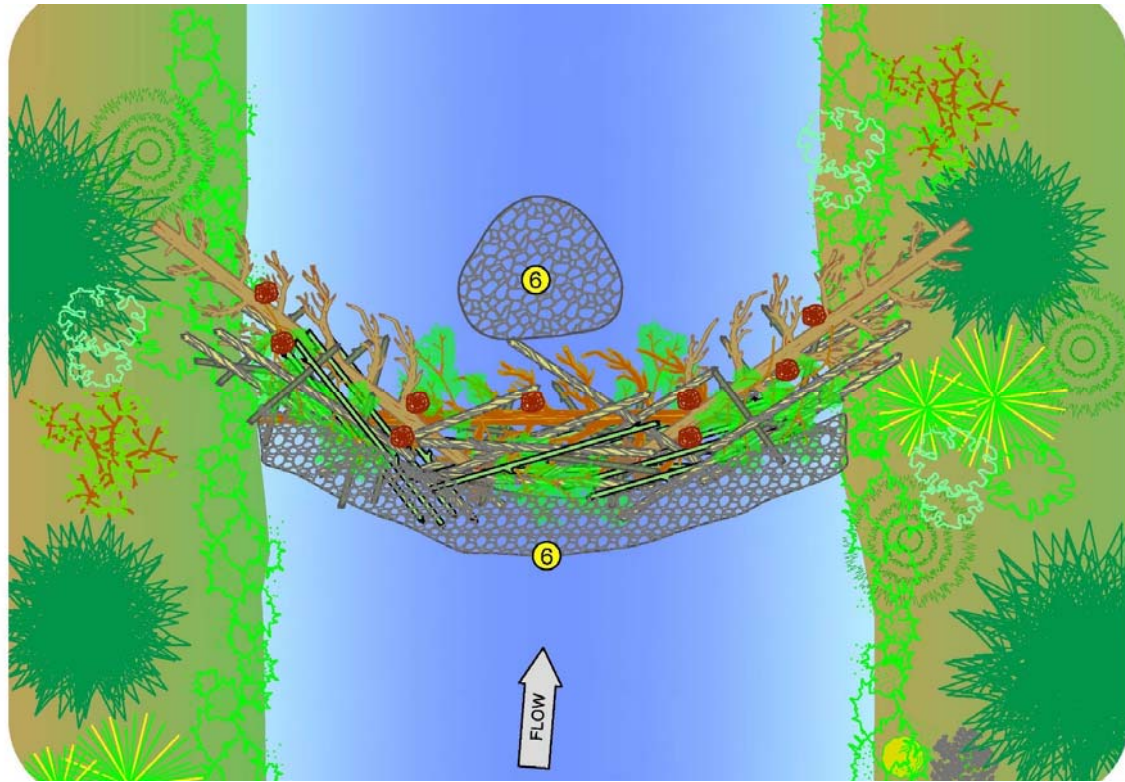


Whiskey Creek Stream and Floodplain Restoration Type 2 - Channel Spanning 2 Log
Grand River Model Watershed
SHEET 1



Whiskey Creek Stream and Floodplain Restoration Type 6 - Riparian Bank Structure
Grand River Model Watershed
SHEET 15

Treatment



Metrics

- ❖ 194 LWD Structures

 - ❖ 335 trees (4.5/100m)

 - ❖ 1072 Cubic Yards of slash

- ❖ 82 Pools Added (19 pools/mile)

 - ❖ Not counting existing pools

- ❖ 35 Acres of Floodplain Inundation

- ❖ 95 acres of riparian habitat enrolled in CREP

 - ❖ Fence and Plant entire project area

Outcome



Monitoring

- ❑ Riparian Fencing and Planting – Action Effectiveness Monitoring
- ❑ Aerial Imagery – Acres Inundated
- ❑ Aerial Imagery – Flights during the 2nd week of July to assess available habitat
 - ❑ Spring Creek Control
 - ❑ Watered habitat units or watered length of stream

Species	Life Stage	Jan		Feb		Mar		Apr		May		June		Jul		Aug		Sept		Oct		Nov		Dec	
		1-15	16-31	1-15	16-28	1-15	16-31	1-15	16-30	1-15	16-31	1-15	16-31	1-15	16-31	1-15	16-31	1-15	16-30	1-15	16-31	1-15	16-30	1-15	16-31
Steelhead (Summer)	Adult Immigration																								
	Adult Holding																								
	Adult Spawning																								
	Incubation																								
	Emergence																								
	Juvenile Rearing																								
	Juvenile Emigration																								

Whiskey Creek & Spring Creek



Thank You

Oregon Watershed Enhancement Board - Funder

Bonneville Power Administration – Environmental Compliance, Designs, Bridge

Sean Welch, BPA Engineer

Aaron Bliesner, USWCD Project Manager

Winston Morton, ODFW Habitat Biologist

Kevin and Sherry Ludviksen - Landowners

Previous actions – ODFW Riparian Fence



Previous actions – Road Improvements

